

INDEX

Brass Push-in fittings	PN Line	7_18
Stainless Steel Push-in fittings	PX Line	19_24
Brass Standard fittings and Flexible Hoses	PA Line	25_28
Couplings and Multiple Connectors	PU Line	29_34
Function fittings	PV Line	35_46



PN LINE

PX LINE

PA LINE & TUBINGS

PU LINE

PV LINE

PN LINE



PN 11

PN 13

PN 14

PN 15

PN 17

PN 18

PN 20

PN 23

Technical remarks [8_9](#)[10_13](#)

PN 11
PN 13
PN 14
PN 15
PN 17
PN 18
PN 20
PN 23



PN 25

PN 26

PN 27

PN 28

PN 29

PN 31

PN 32

PN 35

[13_15](#)

PN 25
PN 26
PN 27
PN 28
PN 29
PN 31
PN 32
PN 35



PN 37

PN 38

PN 39

PN 40

PN 43

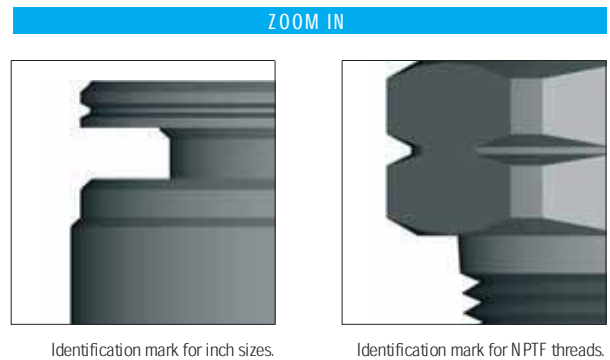
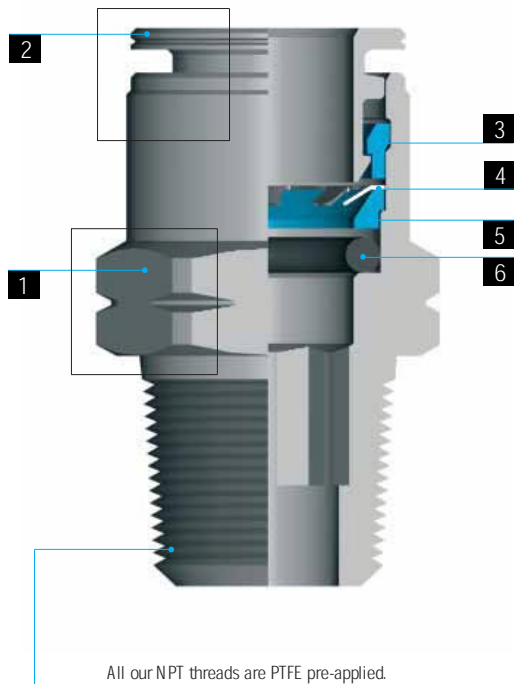
PN 48

[15_17](#)

PN 37
PN 38
PN 39
PN 40
PN 43
PN 48

PN LINE

1 - 2	3	4	5	6
Body and Release Ring	Tightness Ring	Gripping collet	Protection Ring	O-Ring
Brass UNI EN 12164 CW 614N - UNI EN 12165 CW 617N Nickel Plated	Acetal Resin (POM)	Stainless steel AISI 301	Acetal Resin (POM)	NBR (FPM on request)



THE PN LINE

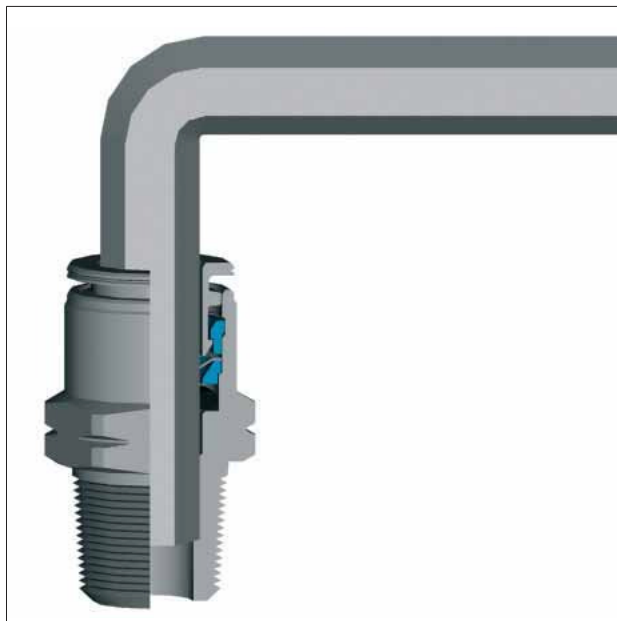
PN is C.MATIC highly performing, extremely compact push-in full metal fitting. Our PN fittings are ready for use as all threads are PTFE pre-applied and no tools are requested to guarantee tight and pressure resistant assemblies. The hose connection is made possible by the presence of a stainless steel gripper and by an O-ring inside of the fitting. To connect, simply push the tubing until it bottoms; the stainless steel teeth grip onto the tubing and holds it captive. The great advantage of our special PTFE coating on threads makes sure that the fitting can be used several times without peeling off. It is a full metal fitting and this makes of it the suitable fitting for the heaviest duty pneumatic applications.

DATA SHEET

Recommended tubings:
PA 6, PA 11, PA 12,
Polyethylene,
Polyurethane (95 durometer or above)
Acceptable tubing tolerances:
+/- .003

Application fields:
Pneumatic circuits.
Working pressure:
Depending on tubings used and always
within: 0 psi ÷ 217 psi
Vacuum rating:
to 28" Hg
Working temperature:
-4 °F ÷ 160° F

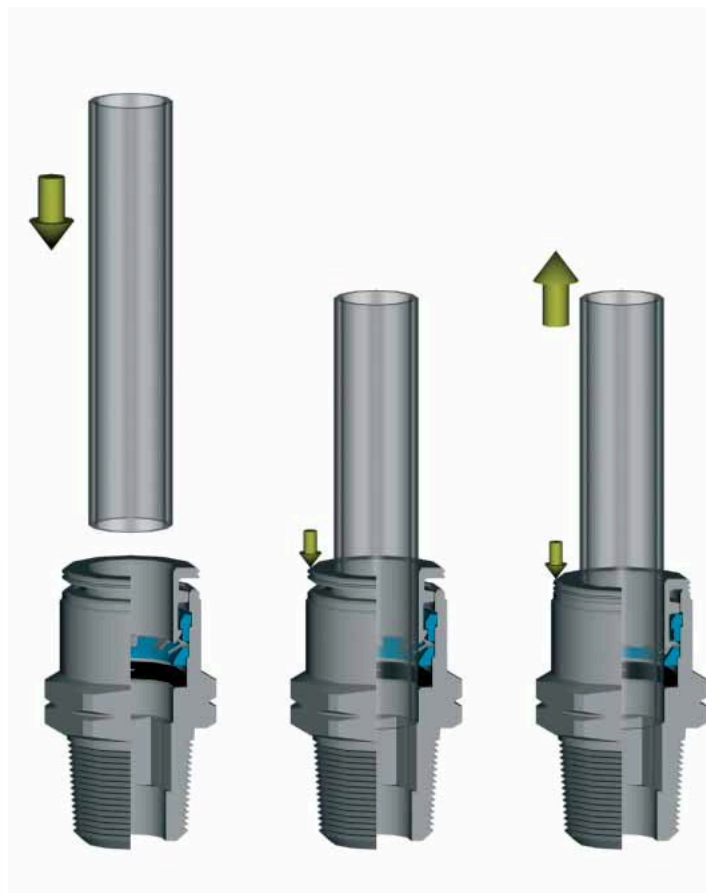
Threads	Threads Specifications	Tightening Torque (lb-ft)				
		10-32	1/8"	1/4"	3/8"	1/2"
NPTF threads	ANSI/ASME B1.20.3		7.376 ÷ 8.851	10.326 ÷ 11.801	11.801 ÷ 13.276	13.276 ÷ 14.751
NPTF pre-coated threads	ANSI/ASME B1.20.3		3.688 ÷ 4.425	5.901 ÷ 7.376	7.376 ÷ 8.851	11.801 ÷ 13.276
UNF parallel threads with seal	ANSI/ASME B1.1	0.738 ÷ 1.106				



Our tapered male straight connector is provided with an inner hex allowing for easy assembly when no space is available.



1



2

3

ASSEMBLY INSTRUCTIONS

1. Cut the tube square (by means of a tube cutter i.e. our PA 34) making sure that no burrs are left and that the tube is not oval.

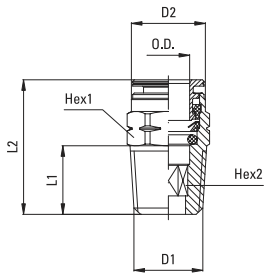
2. Push the tubing until it bottoms.

Tube release

3. While pressing on the release ring, pull out the tube from the fitting.

PN 11

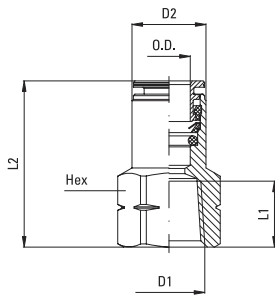
Male Connector



Part Number	Tube OD	D1 UNF	D2	L1	L2	HEX1	HEX2	oz
11 1/8 10-32	1/8	10-32	.275 (7)	.196 (5)	.649 (16.5)	5/16 (7.93)	3/32 (2.38)	.088 (2.5)
11 5/32 10-32	5/32	10-32	.354 (9)	.196 (5)	.767 (19.5)	3/8 (9.52)	3/32 (2.38)	.176 (5)
11 1/4 10-32	1/4	10-32	.472 (12)	.196 (5)	.905 (23)	1/2 (12.7)	3/32 (2.38)	.300 (8.5)
Part Number	Tube OD	D1 NPTF	D2	L1	L2	HEX1	HEX2	oz
11 1/8 1/8	1/8	1/8	.275 (7)	.334 (8.5)	.728 (18.5)	7/16 (11.1)	3/32 (2.38)	.335 (9.5)
11 5/32 1/8	5/32	1/8	.354 (9)	.334 (8.5)	.748 (19)	7/16 (11.1)	1/8 (3.17)	.317 (9)
11 5/32 1/4	5/32	1/4	.354 (9)	.511 (13)	.925 (23.5)	9/16 (14.28)	1/8 (3.17)	.705 (20)
11 1/4 1/8	1/4	1/8	.472 (12)	.334 (8.5)	.846 (21.5)	1/2 (12.7)	5/32 (4)	.353 (10)
11 1/4 1/4	1/4	1/4	.472 (12)	.511 (13)	.944 (24)	9/16 (14.28)	5/32 (4)	.617 (18)
11 5/16 1/8	5/16	1/8	.551 (14)	.334 (8.5)	1.023 (26)	9/16 (14.28)	1/4 (6.35)	.529 (15)
11 5/16 1/4	5/16	1/4	.551 (14)	.511 (13)	.984 (25)	9/16 (14.28)	1/4 (6.35)	.564 (16)
11 5/16 3/8	5/16	3/8	.551 (14)	.511 (13)	.964 (24.5)	11/16 (17.46)	1/4 (6.35)	.987 (28)
11 3/8 1/8	3/8	1/8	.629 (16)	.334 (8.5)	1.082 (27.5)	11/16 (17.46)	1/4 (6.35)	.794 (22.5)
11 3/8 1/4	3/8	1/4	.629 (16)	.511 (13)	1.220 (31)	11/16 (17.46)	5/16 (8)	.952 (27)
11 3/8 3/8	3/8	3/8	.629 (16)	.511 (13)	.964 (24.5)	11/16 (17.46)	5/16 (8)	.882 (25)
11 3/8 1/2	3/8	1/2	.629 (16)	.669 (17)	1.161 (29.5)	7/8 (22.22)	5/16 (8)	1.975 (56)
11 1/2 1/4	1/2	1/4	.748 (19)	.511 (13)	1.299 (33)	13/16 (20.63)	5/16 (8)	1.129 (35)
11 1/2 3/8	1/2	3/8	.748 (19)	.511 (13)	1.122 (28.5)	13/16 (20.63)	13/32 (10.31)	.970 (27.5)
11 1/2 1/2	1/2	1/2	.748 (19)	0.669 (17)	1.161 (29.5)	7/8 (22.22)	13/32 (10.31)	1.587 (46)

PN 13

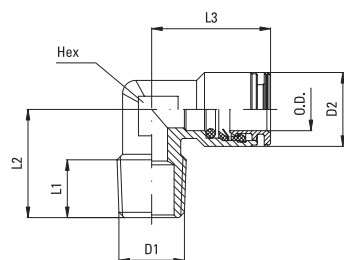
Female Connector



Part Number	Tube OD	D1 NPTF	D2	L1	L2	HEX	oz
13 5/32 1/8	5/32	1/8	.354 (9)	.334 (8.5)	.964 (24.5)	9/16 (14.28)	.423 (12)
13 1/4 1/8	1/4	1/8	.472 (12)	.334 (8.5)	1.043 (26.5)	9/16 (14.28)	.494 (14)
13 1/4 1/4	1/4	1/4	.472 (12)	.511 (13)	1.220 (31)	11/16 (17.46)	.935 (26.5)
13 5/16 1/8	5/16	1/8	.551 (14)	.334 (8.5)	1.039 (26.4)	9/16 (14.28)	.705 (20)
13 5/16 1/4	5/16	1/4	.551 (14)	.511 (13)	1.220 (31)	11/16 (17.46)	1.005 (28.5)
13 3/8 1/4	3/8	1/4	.629 (16)	.511 (13)	1.299 (33)	11/16 (17.46)	1.164 (33)
13 3/8 3/8	3/8	3/8	.629 (16)	.511 (13)	1.299 (33)	13/16 (20.63)	1.340 (38)

PN 14

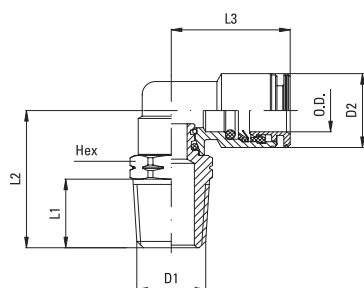
Male Elbow



Part Number	Tube OD	D1 NPTF	D2	L1	L2	L3	HEX	oz
14 5/32 1/8	5/32	1/8	.354 (9)	.334 (8.5)	.610 (15.5)	.669 (17)	.314 (8)	.317 (9)
14 1/4 1/8	1/4	1/8	.472 (12)	.334 (8.5)	.629 (16)	.787 (20)	.393 (10)	.459 (13)
14 1/4 1/4	1/4	1/4	.472 (12)	.433 (11)	.787 (20)	.787 (20)	.393 (10)	.600 (17)
14 5/16 1/8	5/16	1/8	.551 (14)	.334 (8.5)	.669 (17)	.846 (21.5)	.472 (12)	.723 (20.5)
14 5/16 1/4	5/16	1/4	.551 (14)	.433 (11)	.826 (21)	.846 (21.5)	.472 (12)	.794 (22.5)
14 3/8 1/4	3/8	1/4	.629 (16)	.433 (11)	.885 (22.5)	.944 (24)	.551 (14)	1.041 (29.5)
14 3/8 3/8	3/8	3/8	.629 (16)	.433 (11)	.885 (22.5)	.944 (24)	.551 (14)	1.182 (33.5)

PN 15

Swivel Male Elbow

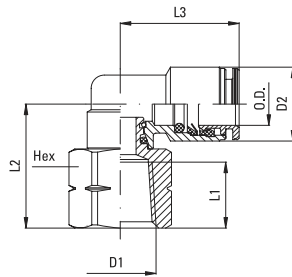


Part Number	Tube OD	D1 UNF	D2	L1	L2	L3	HEX	oz
15 1/8 10-32	1/8	10-32	.275 (7)	.196 (5)	.649 (16.5)	.570 (14.5)	3/8 (9.52)	.282 (8)
15 5/32 10-32	5/32	10-32	.354 (9)	.196 (5)	.649 (16.5)	.669 (17)	3/8 (9.52)	.353 (10)

Part Number	Tube OD	D1 NPTF	D2	L1	L2	L3	HEX	oz
15 1/8 1/8	1/8	1/8	.275 (7)	.334 (8.5)	.728 (18.5)	.570 (14.5)	7/16 (11.11)	.370 (10.5)
15 5/32 1/8	5/32	1/8	.354 (9)	.334 (8.5)	.728 (18.5)	.669 (17)	7/16 (11.11)	.441 (12.5)
15 5/32 1/4	5/32	1/4	.354 (9)	.511 (13)	1.023 (26)	.748 (19)	9/16 (14.28)	.794 (22.5)
15 1/4 1/8	1/4	1/8	.472 (12)	.334 (8.5)	.826 (21)	.846 (21.5)	1/2 (12.7)	.688 (19.5)
15 1/4 1/4	1/4	1/4	.472 (12)	.511 (13)	1.023 (26)	.846 (21.5)	9/16 (14.28)	.882 (25)
15 5/16 1/8	5/16	1/8	.551 (14)	.334 (8.5)	.826 (21)	.866 (22)	1/2 (12.7)	.811 (23)
15 5/16 1/4	5/16	1/4	.551 (14)	.511 (13)	1.023 (26)	.866 (22)	9/16 (14.28)	1.005 (28.5)
15 5/16 3/8	5/16	3/8	.551 (14)	.511 (13)	1.122 (28.5)	.885 (22.5)	11/16 (17.46)	1.411 (40)
15 3/8 1/8	3/8	1/8	.629 (16)	.334 (8.5)	.944 (24)	.984 (25)	11/16 (17.46)	1.376 (39)
15 3/8 1/4	3/8	1/4	.629 (16)	.511 (13)	1.122 (28.5)	.984 (25)	11/16 (17.46)	1.482 (42)
15 3/8 3/8	3/8	3/8	.629 (16)	.511 (13)	1.122 (28.5)	.984 (25)	11/16 (17.46)	1.517 (43)
15 3/8 1/2	3/8	1/2	.629 (16)	.669 (17)	1.338 (34)	.984 (25)	7/8 (22.22)	2.187 (62)
15 1/2 1/4	1/2	1/4	.748 (19)	.511 (13)	1.259 (32)	1.082 (27.5)	13/16 (20.63)	2.346 (66.5)
15 1/2 3/8	1/2	3/8	.748 (19)	.511 (13)	1.259 (32)	1.082 (27.5)	13/16 (20.63)	2.222 (63)
15 1/2 1/2	1/2	1/2	.748 (19)	.669 (17)	1.437 (36.5)	1.082 (27.5)	7/8 (22.22)	2.663 (75.5)

PN 17

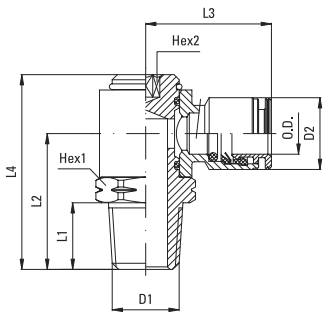
Swivel Female Elbow



Part Number	Tube OD	D ₁ NPTF	D ₂	L ₁	L ₂	L ₃	HEX	oz
17 5/32 1/8	5/32	1/8	.354 (9)	.334 (8.5)	.767 (19.5)	.748 (19)	9/16 (14.28)	.741 (21)
17 1/4 1/8	1/4	1/8	.472 (12)	.334 (8.5)	.767 (19.5)	.846 (21.5)	9/16 (14.28)	.811 (23)
17 1/4 1/4	1/4	1/4	.472 (12)	.511 (13)	.925 (23.5)	.846 (21.5)	11/16 (17.46)	1.129 (32)
17 5/16 1/8	5/16	1/8	.551 (14)	.334 (8.5)	.767 (19.5)	.866 (22)	9/16 (14.28)	.935 (26.5)
17 5/16 1/4	5/16	1/4	.551 (14)	.511 (13)	.925 (23.5)	.866 (22)	11/16 (17.46)	1.252 (35.5)
17 3/8 1/4	3/8	1/4	.629 (16)	.511 (13)	1.003 (25.5)	.984 (25)	11/16 (17.46)	1.570 (44.5)
17 3/8 3/8	3/8	3/8	.629 (16)	.511 (13)	1.003 (25.5)	.984 (25)	13/16 (20.63)	1.728 (49)

PN 18

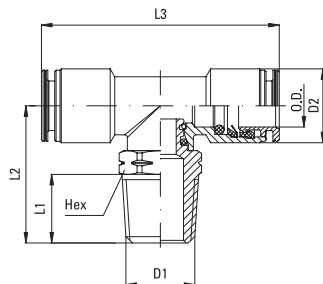
Swivel fitting with banjo ring



Part Number	Tube OD	D ₁ NPTF	D ₂	L ₁	L ₂	L ₃	L ₄	HEX ₁	HEX ₂	oz
18 5/32 1/8	5/32	1/8	.354 (9)	.334 (8.5)	.787 (20)	.787 (20)	1.200 (30.5)	9/16 (14.28)	1/8 (3.17)	1.005 (28.5)
18 1/4 1/8	1/4	1/8	.472 (12)	.334 (8.5)	.787 (20)	.885 (22.5)	1.200 (30.5)	9/16 (14.28)	1/8 (3.17)	1.058 (30)
18 1/4 1/4	1/4	1/4	.472 (12)	.511 (13)	1.023 (26)	.925 (23.5)	1.476 (37.5)	11/16 (17.46)	3/16 (4.76)	1.728 (49)
18 5/16 1/8	5/16	1/8	.551 (14)	.334 (8.5)	.787 (20)	.885 (22.5)	1.200 (30.5)	9/16 (14.28)	1/8 (3.17)	
18 5/16 1/4	5/16	1/4	.551 (14)	.511 (13)	1.023 (26)	.944 (24)	1.476 (37.5)	11/16 (17.46)	3/16 (4.76)	
18 5/16 3/8	5/16	3/8	.551 (14)	.511 (13)	1.102 (28)	1.023 (26)	1.614 (41)	13/16 (20.63)	1/4 (6.35)	
18 3/8 1/4	3/8	1/4	.629 (16)	.511 (13)	1.023 (26)	1.023 (26)	1.476 (37.5)	11/16 (17.46)	3/16 (4.76)	1.834 (52)
18 3/8 3/8	3/8	3/8	.629 (16)	.511 (13)	1.102 (28)	1.102 (28)	1.614 (41)	13/16 (20.63)	1/4 (6.35)	2.963 (84)

PN 20

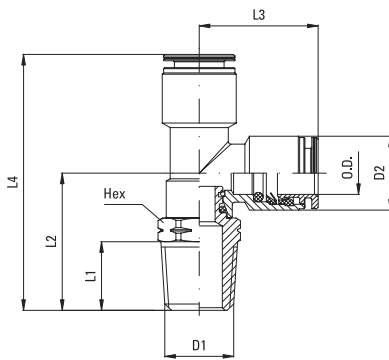
Swivel Tee



Part Number	Tube OD	D ₁ NPTF	D ₂	L ₁	L ₂	L ₃	HEX	oz
20 1/8 1/8	1/8	1/8	.275 (7)	.334 (8.5)	.728 (18.5)	1.141 (29)	7/16 (11.11)	.670 (19)
20 5/32 1/8	5/32	1/8	.354 (9)	.334 (8.5)	.826 (21)	1.496 (38)	1/2 (12.7)	.776 (22)
20 5/32 1/4	5/32	1/4	.354 (9)	.511 (13)	1.023 (26)	1.496 (38)	9/16 (14.28)	.970 (27.5)
20 1/4 1/8	1/4	1/8	.472 (12)	.334 (8.5)	.826 (21)	1.692 (43)	1/2 (12.7)	.917 (26)
20 1/4 1/4	1/4	1/4	.472 (12)	.511 (13)	1.023 (26)	1.692 (43)	9/16 (14.28)	1.076 (30.5)
20 5/16 1/8	5/16	1/8	.551 (14)	.334 (8.5)	.826 (21)	1.732 (44)	1/2 (12.7)	1.111 (31.5)
20 5/16 1/4	5/16	1/4	.551 (14)	.511 (13)	1.023 (26)	1.732 (44)	9/16 (14.28)	1.305 (37)
20 3/8 1/4	3/8	1/4	.629 (16)	.511 (13)	1.122 (28.5)	1.968 (50)	11/16 (17.46)	1.905 (54)
20 3/8 3/8	3/8	3/8	.629 (16)	.511 (13)	1.122 (28.5)	1.968 (50)	11/16 (17.46)	1.940 (55)
20 1/2 3/8	1/2	3/8	.748 (19)	.511 (13)	1.259 (32)	2.165 (55)	13/16 (20.63)	2.751 (78)
20 1/2 1/2	1/2	1/2	.748 (19)	.669 (17)	1.437 (36.5)	2.165 (55)	7/8 (22.22)	3.175 (90)

PN 23

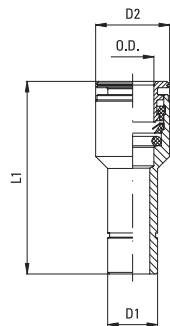
Swivel Male Run Tee



Part Number	Tube OD	D ₁ NPTF	D ₂	L ₁	L ₂	L ₃	L ₄	HEX	oz
23 1/8 1/8	1/8	1/8	.275 (7)	.334 (8.5)	.728 (18.5)	.649 (16.5)	1.476 (37.5)	7/16 (11.11)	.688 (19.5)
23 5/32 1/8	5/32	1/8	.354 (9)	.334 (8.5)	.826 (21)	.748 (19)	1.574 (40)	1/2 (12.7)	.811 (23)
23 5/32 1/4	5/32	1/4	.354 (9)	.511 (13)	1.023 (26)	.748 (19)	1.771 (45)	9/16 (14.28)	.988 (28)
23 1/4 1/8	1/4	1/8	.472 (12)	.334 (8.5)	.826 (21)	.846 (21.5)	1.673 (42.5)	1/2 (12.7)	.935 (26.5)
23 1/4 1/4	1/4	1/4	.472 (12)	.511 (13)	1.023 (26)	.846 (21.5)	1.870 (47.5)	9/16 (14.28)	1.093 (31)
23 5/16 1/8	5/16	1/8	.551 (14)	.334 (8.5)	.826 (21)	.866 (22)	1.692 (43)	1/2 (12.7)	1.129 (32)
23 5/16 1/4	5/16	1/4	.551 (14)	.511 (13)	1.023 (26)	.866 (22)	1.889 (48)	9/16 (14.28)	1.305 (37)
23 3/8 1/4	3/8	1/4	.629 (16)	.511 (13)	1.122 (28.5)	.984 (25)	2.106 (53.5)	11/16 (17.46)	1.905 (54)
23 3/8 3/8	3/8	3/8	.629 (16)	.511 (13)	1.122 (28.5)	.984 (25)	2.106 (53.5)	11/16 (17.46)	1.940 (55)
23 1/2 3/8	1/2	3/8	.748 (19)	.511 (13)	1.259 (32)	1.082 (27.5)	2.342 (59.5)	13/16 (20.63)	2.734 (77.5)
23 1/2 1/2	1/2	1/2	.748 (19)	.669 (17)	1.437 (36.5)	1.082 (27.5)	2.519 (64)	7/8 (22.22)	3.139 (89)

PN 25

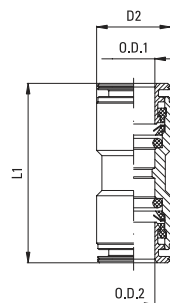
Reducer



Part Number	Tube OD	D ₁	D ₂	L ₁	oz
25 1/8 5/32	1/8	5/32	.275 (7)	1.141 (29)	.088 (2.5)
25 5/32 1/4	5/32	1/4	.354 (9)	1.220 (31)	.265 (7.5)
25 1/4 5/16	1/4	5/16	.472 (12)	1.299 (33)	.406 (11.5)
25 1/4 3/8	1/4	3/8	.472 (12)	1.377 (35)	.476 (13.5)
25 1/4 1/2	1/4	1/2	.472 (12)	1.377 (35)	.882 (25)
25 5/16 3/8	5/16	3/8	.551 (14)	1.377 (35)	.547 (15.5)
25 3/8 1/2	3/8	1/2	.629 (16)	1.417 (36)	.864 (24.5)

PN 26

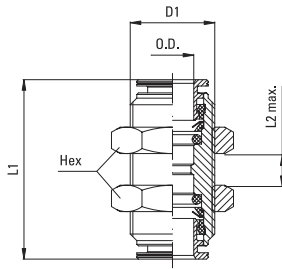
Union



Part Number	Tube OD ₁	Tube OD ₂	D ₂	L ₁	oz
26 1/8 1/8	1/8	1/8	.275 (7)	.866 (22)	.106 (3)
26 5/32 5/32	5/32	5/32	.354 (9)	1.062 (27)	.265 (7.5)
26 1/4 1/4	1/4	1/4	.472 (12)	1.299 (33)	.476 (13.5)
26 5/16 5/16	5/16	5/16	.551 (14)	1.299 (33)	.635 (18)
26 3/8 3/8	3/8	3/8	.629 (16)	1.456 (37)	.882 (25)
26 1/2 1/2	1/2	1/2	.748 (19)	1.535 (39)	1.411 (40)

PN 27

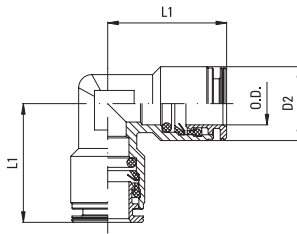
Bulkhead union



Part Number	Tube OD	D ₁	L ₁	L ₂	HEX	oz
27 1/8 1/8	1/8	M10x1	.866 (22)	.314 (8)	.551 (14)	.476 (13.5)
27 5/32 5/32	5/32	M12x1	1.062 (27)	.433 (11)	.629 (16)	.811 (23)
27 1/4 1/4	1/4	M14x1	1.299 (33)	.629 (16)	.708 (18)	1.146 (32.5)
27 5/16 5/16	5/16	M16x1	1.299 (33)	.669 (17)	.787 (20)	1.376 (39)
27 3/8 3/8	3/8	M18x1	1.456 (37)	.748 (19)	.866 (22)	1.870 (53)
27 1/2 1/2	1/2	M20x1	1.535 (39)	.787 (20)	.944 (24)	1.940 (55)

PN 28

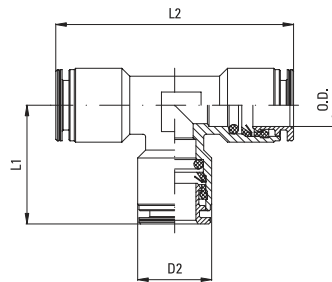
Union Elbow



Part Number	Tube OD	D ₂	L ₁	oz
28 1/8 1/8	1/8	.275 (7)	.590 (15)	.159 (4.5)
28 5/32 5/32	5/32	.354 (9)	.669 (17)	.335 (9.5)
28 1/4 1/4	1/4	.472 (12)	.787 (20)	.547 (15.5)
28 5/16 5/16	5/16	.551 (14)	.846 (21.5)	.829 (23.5)
28 3/8 3/8	3/8	.629 (16)	.964 (24.5)	1.129 (32)
28 1/2 1/2	1/2	.748 (19)	1.0 (25.5)	1.817 (51.5)

PN 29

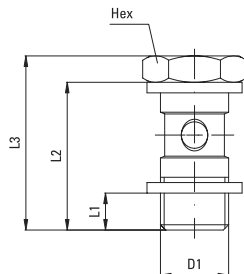
Union Tee



Part Number	Tube OD	D ₂	L ₁	L ₂	oz
29 1/8 1/8	1/8	.275 (7)	.590 (15)	1.181 (30)	.194 (5.5)
29 5/32 5/32	5/32	.354 (9)	.669 (17)	1.338 (34)	.441 (12.5)
29 1/4 1/4	1/4	.472 (12)	.787 (20)	1.574 (40)	.723 (20.5)
29 5/16 5/16	5/16	.551 (14)	.846 (21.5)	1.692 (43)	.988 (28)
29 3/8 3/8	3/8	.629 (16)	.964 (24.5)	1.929 (49)	1.482 (42)
29 1/2 1/2	1/2	.748 (19)	1.0 (25.5)	2.00 (51)	2.081 (59)

PN 31

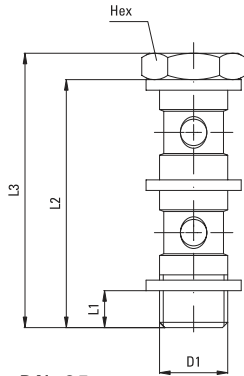
Simple Screw



Part Number	D ₁ B S P	L ₁	L ₂	L ₃	HEX	oz
31 00 18	G1/8	.196 (5)	.905 (23)	1.062 (27)	.551 (14)	.494 (14)
31 00 14	G1/4	.255 (6.5)	1.043 (26.5)	1.240 (31.5)	.669 (17)	.935 (26.5)
31 00 38	G3/8	.275 (7)	1.181 (30)	1.417 (36)	.787 (20)	1.587 (45)

PN 32

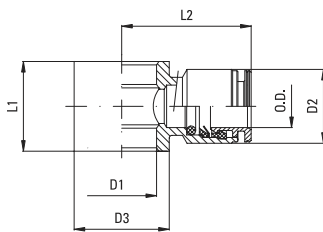
Double Screw



Part Number	D1 BSP	L1	L2	L3	HEX	oz
32 00 18	G1/8	.196 (5)	1.555 (39.5)	1.673 (42.5)	.551 (14)	.705 (20)
32 00 14	G1/4	.255 (6.5)	1.771 (45)	1.968 (50)	.669 (17)	1.393 (39.5)
32 00 38	G3/8	.275 (7)	2.027 (51.5)	2.263 (57.5)	.787 (20)	2.169 (61.5)

PN 35

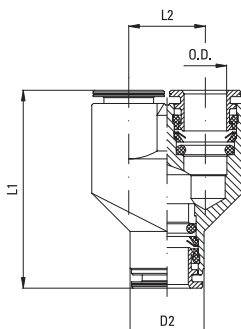
B anjo Ring



Part Number	Tube OD	D1	D2	D3	L1	L2	oz
35 5/32 1/8	5/32	.393 (10)	.354 (9)	.551 (14)	.590 (15)	.787 (20)	.494 (14)
35 1/4 1/8	1/4	.393 (10)	.472 (12)	.551 (14)	.590 (15)	.885 (22.5)	.547 (15.5)
35 1/4 1/4	1/4	.519 (13.2)	.472 (12)	.669 (17)	.669 (17)	.925 (23.5)	
35 5/16 1/8	5/16	.393 (10)	.551 (14)	.551 (14)	.590 (15)	.885 (22.5)	.670 (19)
35 5/16 1/4	5/16	.519 (13.2)	.551 (14)	.669 (17)	.669 (17)	.944 (24)	
35 5/16 3/8	5/16	.669 (17)	.551 (14)	.826 (21)	.787 (20)	1.023 (26)	
35 3/8 1/4	3/8	.519 (13.2)	.629 (16)	.669 (17)	.669 (17)	1.023 (26)	
35 3/8 3/8	3/8	.669 (17)	.629 (16)	.826 (21)	.787 (20)	1.102 (28)	1.270 (36)

PN 37

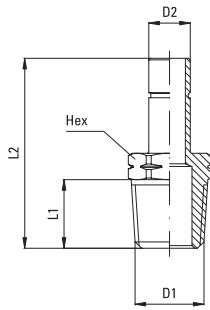
Union Y Connector



Part Number	Tube OD	D2	L1	L2	oz
37 1/8 1/8	1/8	.275 (7)	.866 (22)	.275 (7)	.635 (18)
37 5/32 5/32	5/32	.354 (9)	1.122 (28.5)	.374 (9.5)	.476 (13.5)
37 1/4 1/4	1/4	.472 (12)	1.377 (35)	.492 (12.5)	1.093 (31)
37 5/16 5/16	5/16	.551 (14)	1.476 (37.5)	.570 (14.5)	1.482 (42)

PN 38

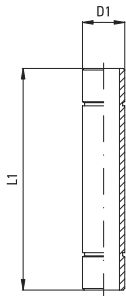
Stem adaptor



Part Number	D1 UNF	D2	L1	L2	HEX	oz
38 5/32 10-32	10-32	5/32	.196 (5)	.984 (25)	5/16 (7.93)	.088 (2.5)
Part Number	D1 NPTF	D2	L1	L2	HEX	oz
38 5/32 1/8	1/8	5/32	.334 (8.5)	1.122 (28.5)	7/16 (11.11)	.247 (7)
38 5/32 1/4	1/4	5/32	.511 (13)	1.318 (33.5)	9/16 (14.28)	.494 (14)
38 1/4 1/8	1/8	1/4	.334 (8.5)	1.200 (30.5)	7/16 (11.11)	.300 (8.5)
38 1/4 1/4	1/4	1/4	.511 (13)	1.397 (35.5)	9/16 (14.28)	.529 (15)
38 5/16 1/8	1/8	5/16	.334 (8.5)	1.279 (32.5)	7/16 (11.11)	.317 (9)
38 5/16 1/4	1/4	5/16	.511 (13)	1.476 (37.5)	9/16 (14.28)	.547 (15.5)
38 3/8 1/4	1/4	3/8	.511 (13)	1.555 (39.5)	9/16 (14.28)	.582 (16.5)
38 3/8 3/8	3/8	3/8	.511 (13)	1.574 (40)	11/16 (17.46)	.811 (23)
38 1/2 3/8	3/8	1/2	.511 (13)	1.692 (43)	11/16 (17.46)	.899 (25.5)
38 1/2 1/2	1/2	1/2	.669 (17)	1.889 (48)	7/8 (22.22)	1.517 (43)

PN 39

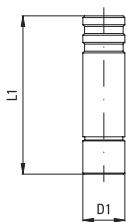
Extension Piece



Part Number	D1	L1	oz
39 5/32 5/32	5/32	1.181 (30)	.088 (2.5)
39 1/4 1/4	1/4	1.377 (35)	.176 (5)
39 5/16 5/16	5/16	1.377 (35)	.265 (7.5)
39 3/8 3/8	3/8	1.574 (40)	.300 (8.5)
39 1/2 1/2	1/2	1.653 (42)	.494 (14)

PN 40

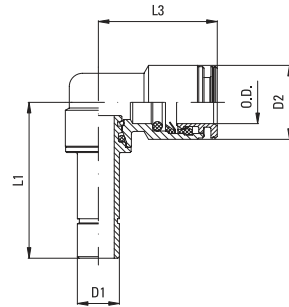
Plug




Part Number	D1	L1	oz
40 1/8 00	1/8	.787 (20)	.046 (1.3)
40 5/32 00	5/32	.984 (25)	.088 (2.5)
40 1/4 00	1/4	1.181 (30)	.229 (6.5)
40 5/16 00	5/16	1.181 (30)	.441 (12.5)
40 3/8 00	3/8	1.377 (35)	.723 (20.5)
40 1/2 00	1/2	1.496 (38)	1.482 (42)

PN 43

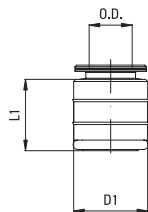
Plug-in Elbow




Part Number	Tube OD	D ₁	L ₁	L ₂	oz 
43 5/32 00	5/32	5/32	1.003 (25.5)	.669 (17)	
43 1/4 00	1/4	1/4	1.161 (29.5)	.846 (21.5)	
43 5/16 00	5/16	5/16	1.161 (29.5)	.866 (22)	
43 3/8 00	3/8	3/8	1.319 (33.5)	.984 (25)	

PN 48

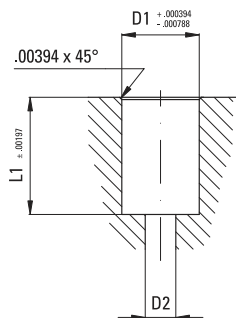
Press-in Cartridge



Part Number	Tube OD	D ₁	L ₁	oz 
48 5/32 00	5/32	.354 (9)	.453 (11.5)	
48 1/4 00	1/4	.472 (12)	.512 (13)	
48 5/16 00	5/16	.551 (14)	.532 (13.5)	
48 3/8 00	3/8	.63 (16)	.602 (15.3)	
48 1/2 00	1/2	.787 (20)	.65 (16.5)	

Pls always specify if body's material housing cartridges differs from plastics.

Cartridges seat drilling plan



Tube OD	D ₁	D ₂	L ₁
5/32	.354 (9)	.118 (3)	.453 (11.5)
1/4	.472 (12)	.197 (5)	.512 (13)
5/16	.551 (14)	.276 (7)	.532 (13.5)
3/8	.63 (16)	.354 (9)	.602 (15.3)
1/2	.787 (20)	.433 (11)	.65 (16.5)



PX LINE



PX 11

PX 15

PX 20

PX 25

PX 26

PX 28

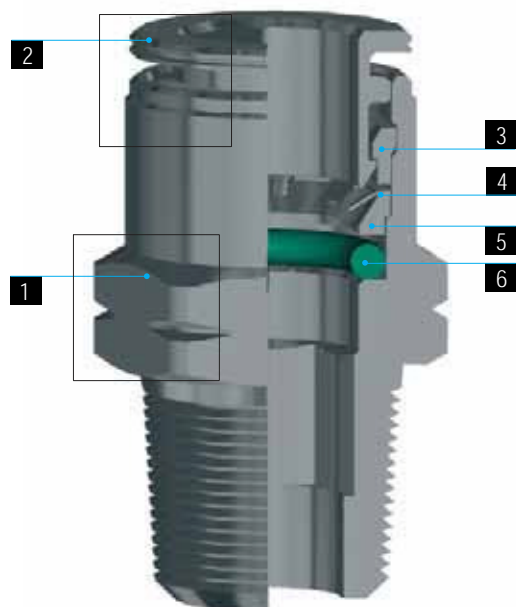
PX 29

Technical remarks [20_21](#)
[22_23](#)

PX 11
PX 15
PX 20
PX 25
PX 26
PX 28
PX 29

PX LINE

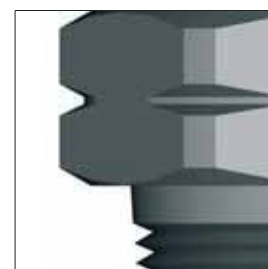
1	2	3	4	5	6
Body	Release ring	Tightness ring	Gripping collet	Protection ring	O-Ring
Stainless steel AISI 316L	Stainless steel AISI 316L	Stainless steel AISI 316L	Stainless steel AISI 301	Stainless steel AISI 316L	FPM /FKM



ZOOM IN



Identification mark for inch sizes



Identification mark for NPTF threads

THE PX LINE

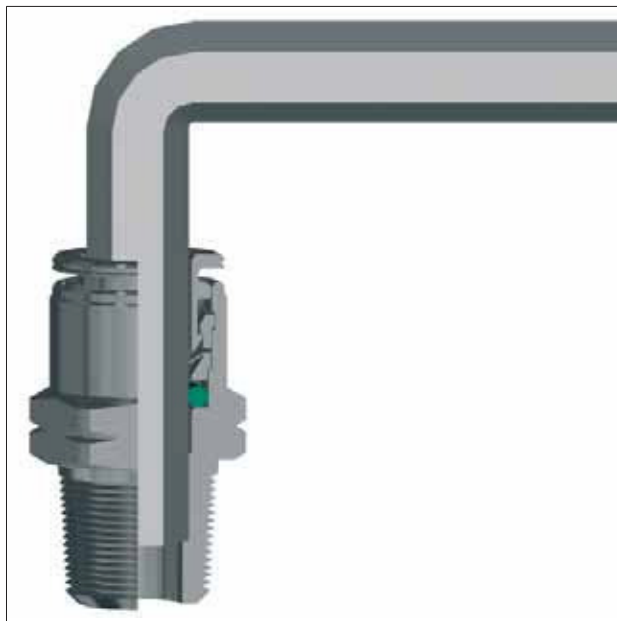
PX is our new stainless steel fittings line. Suitable for all those applications where brass nickel-plated and acetal fittings are banned, the new AISI 316L fitting is conceived to withstand corrosive environments (substances), to channel aggressive fluids and to be used in the food, pharmaceutical and chemical industries. PX comes with FPM seals to guarantee the best performance at the highest temperatures.

DATA SHEET

Recommended tubings:
PVDF, PTFE
Acceptable tubing tolerances:
+/- .003"

Application fields:
Food, chemical, pharmaceutical, oil and packaging industry.
Working pressure:
Pressure varies depending on the tubing used and in any case it never has to exceed 217 psi.
In case of application with fluids, pls follow instructions below.
Constant pressure:
Max pressure 217 psi
Pulse pressure:
Max pressure 145 psi
Vacuum rating:
to 28" Hg
Working temperature:
- 4° F ÷ 302 ° F depending on the materials and tube diameters used

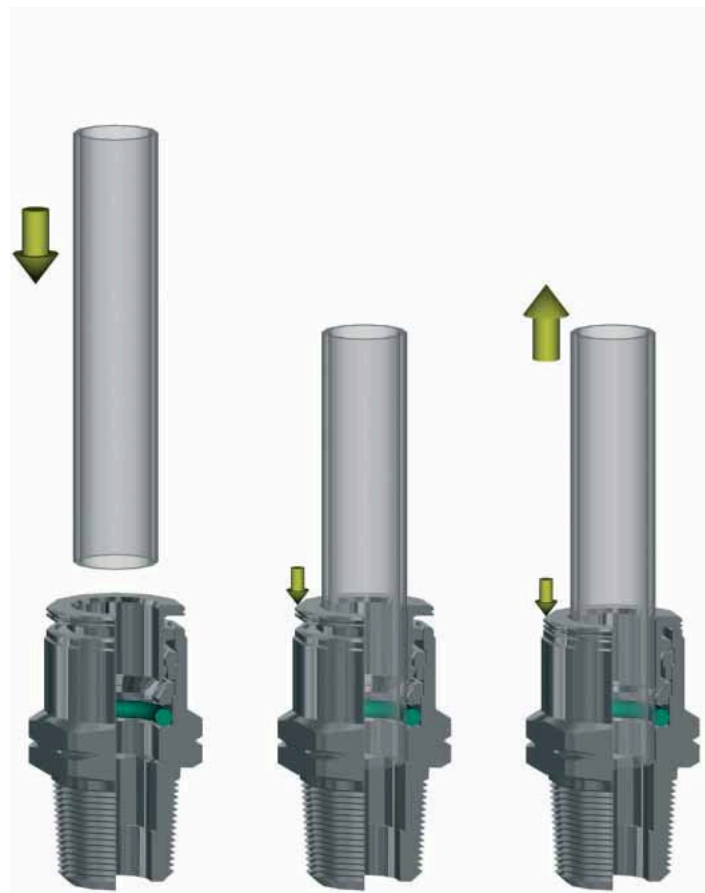
Threads	Threads Specifications	Tightening Torque (lb-ft)				
		10-32	1/8"	1/4"	3/8"	1/2"
NPTF threads	ANSI/ASME B1.20.3		7.376 ÷ 8.851	10.326 ÷ 11.801	11.801 ÷ 13.276	13.276 ÷ 14.751
NPTF pre-coated threads	ANSI/ASME B1.20.3		3.688 ÷ 4.425	5.901 ÷ 7.376	7.376 ÷ 8.851	11.801 ÷ 13.276
UNF parallel threads with seal	ANSI/ASME B1.1	0.738 ÷ 1.106				



Our tapered male straight connector is provided with an inner hex allowing for easy assembly when no space is available.



1



2

3

ASSEMBLY INSTRUCTIONS

1. Cut the tube square (by means of a tube cutter i.e. our PA 34) making sure that no burrs are left and that the tube is not oval.

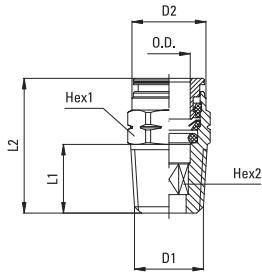
2. Push the tubing until it bottoms.


Tube release

3. While pressing on the release ring pull out the tube from the fitting.

PX 11

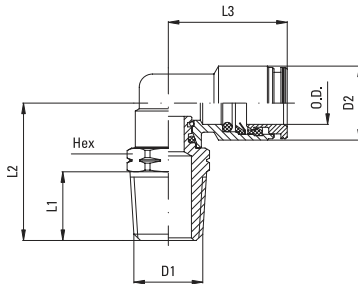
Male Connector




Part Number	Tube OD	D1 NPTF	D2	L1	L2	HEX 1 (mm)	HEX2	oz 
11 5/32 1/8	5/32	1/8	.354 (9)	.334 (8.5)	.748 (19)	11	1/8 (3.17)	
11 1/4 1/8	1/4	1/8	.472 (12)	.334 (8.5)	.846 (21.5)	13	5/32 (4)	
11 1/4 1/4	1/4	1/4	.472 (12)	.511 (13)	.944 (24)	14	5/32 (4)	
11 5/16 1/4	5/16	1/4	.551 (14)	.511 (13)	.984 (25)	14	1/4 (6.35)	
11 3/8 1/4	3/8	1/4	.629 (16)	.511 (13)	1.220 (31)	17	5/16 (8)	
11 3/8 3/8	3/8	3/8	.629 (16)	.511 (13)	.964 (24.5)	18	5/16 (8)	
11 1/2 3/8	1/2	3/8	.748 (19)	.511 (13)	1.122 (28.5)	20	13/32 (10.31)	
11 1/2 1/2	1/2	1/2	.748 (19)	.669 (17)	1.161 (29.5)	22	13/32 (10.31)	

PX 15

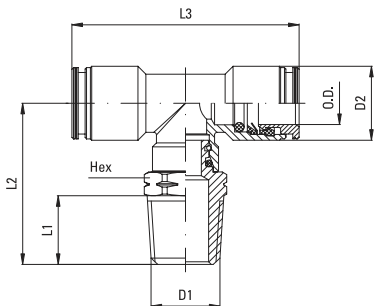
Swivel Male Elbow




Part Number	Tube OD	D1 NPTF	D2	L1	L2	L3	HEX (mm)	oz 
15 5/32 1/8	5/32	1/8	.354 (9)	.334 (8.5)	.728 (18.5)	.669 (17)	11	
15 1/4 1/8	1/4	1/8	.472 (12)	.334 (8.5)	.826 (21)	.846 (21.5)	13	
15 1/4 1/4	1/4	1/4	.472 (12)	.511 (13)	1.023 (26)	.846 (21.5)	14	
15 5/16 1/4	5/16	1/4	.551 (14)	.511 (13)	1.023 (26)	.866 (22)	14	
15 3/8 1/4	3/8	1/4	.629 (16)	.511 (13)	1.122 (28.5)	.984 (25)	17	
15 3/8 3/8	3/8	3/8	.629 (16)	.511 (13)	1.122 (28.5)	.984 (25)	18	
15 1/2 3/8	1/2	3/8	.748 (19)	.511 (13)	1.259 (32)	1.082 (27.5)	20	
15 1/2 1/2	1/2	1/2	.748 (19)	.669 (17)	1.437 (36.5)	1.082 (27.5)	22	

PX 20

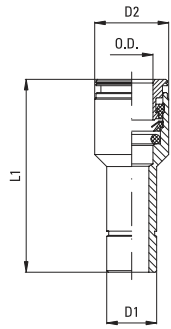
Swivel Tee



Part Number	Tube OD	D1 NPTF	D2	L1	L2	L3	HEX (mm)	oz 
20 5/32 1/8	5/32	1/8	.354 (9)	.334 (8.5)	.905 (23)	1.337 (34)	11	
20 1/4 1/8	1/4	1/8	.472 (12)	.334 (8.5)	.905 (23)	1.614 (41)	13	
20 1/4 1/4	1/4	1/4	.472 (12)	.511 (13)	1.2 (30.5)	1.614 (41)	14	
20 5/16 1/4	5/16	1/4	.551 (14)	.511 (13)	1.2 (30.5)	1.653 (42)	14	
20 3/8 1/4	3/8	1/4	.629 (16)	.511 (13)	1.259 (32)	1.811 (46)	17	
20 3/8 3/8	3/8	3/8	.629 (16)	.511 (13)	1.259 (32)	1.811 (46)	18	

PX 25

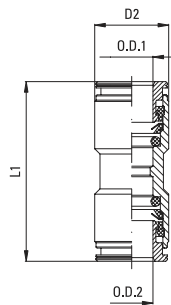
Reducer



Part Number	Tube OD	D1	D2	L1	oz
25 5/32 1/4	5/32	1/4	.354 (9)	1.220 (31)	
25 1/4 5/16	1/4	5/16	.472 (12)	1.377 (34)	
25 1/4 3/8	1/4	3/8	.472 (12)	1.377 (34)	
25 5/16 3/8	5/16	3/8	.551 (14)	1.417 (36)	

PX 26

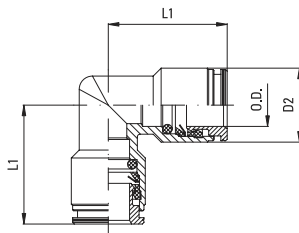
Union



Part Number	Tube OD1	Tube OD2	D2	L1	oz
26 5/32 5/32	5/32	5/32	.354 (9)	1.062 (27)	
26 1/4 1/4	1/4	1/4	.472 (12)	1.299 (33)	
26 5/16 5/16	5/16	5/16	.551 (14)	1.299 (33)	
26 3/8 3/8	3/8	3/8	.629 (16)	1.456 (37)	
26 1/2 1/2	1/2	1/2	.748 (19)	1.535 (39)	

PX 28

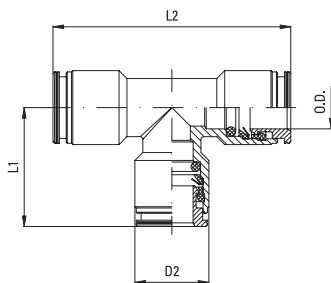
Union Elbow



Part Number	Tube OD	D2	L1	oz
28 5/32 5/32	5/32	.354 (9)	.669 (17)	
28 1/4 1/4	1/4	.472 (12)	.787 (20)	
28 5/16 5/16	5/16	.551 (14)	.846 (21.5)	
28 3/8 3/8	3/8	.629 (16)	.964 (24.5)	
28 1/2 1/2	1/2	.748 (19)	1.023 (26)	

PX 29

Union Tee



Part Number	Tube OD	D2	L1	L2	oz
29 5/32 5/32	5/32	.354 (9)	.669 (17)	1.338 (34)	
29 1/4 1/4	1/4	.472 (12)	.787 (20)	1.574 (40)	
29 5/16 5/16	5/16	.551 (14)	.846 (21.5)	1.692 (43)	
29 3/8 3/8	3/8	.629 (16)	.964 (24.5)	1.929 (49)	
29 1/2 1/2	1/2	.748 (19)	1.023 (26)	2.046 (52)	



PA LINE



PA 14



PA 16



PA 17



PA 19



PA 34



PA 37



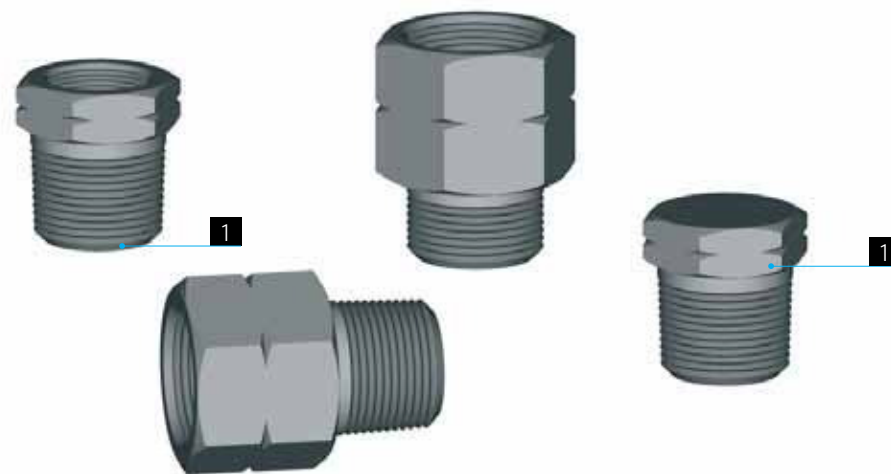
TUBING

Technical remarks [26_26](#)
[27_28](#)

PA 14
PA 16
PA 17
PA 19
PA 34
PA 37
TUBING

Body

Brass UNI EN 12164 CW 614N Nickel Plated



Threads	Threads Specifications	Tightening Torque (lb-ft)				
		10-32	1/8"	1/4"	3/8"	1/2"
NPTF threads	ANSI/ASME B1.20.3		7.376 ÷ 8.851	10.326 ÷ 11.801	11.801 ÷ 13.276	13.276 ÷ 14.751
NPTF pre-coated threads	ANSI/ASME B1.20.3		3.688 ÷ 4.425	5.901 ÷ 7.376	7.376 ÷ 8.851	11.801 ÷ 13.276
UNF parallel threads with seal	ANSI/ASME B1.1	0.738 ÷ 1.106				

THE PA LINE

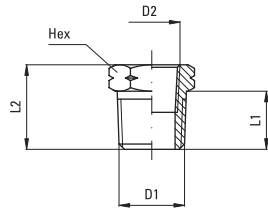
PA is our range of accessories, a complement line to the Push-in and the flow control fittings.
All components are brass nickel-plated

DATA SHEET

Max working pressure:
870 psi
Application fields:
Pneumatic, hydraulic, oleodynamic and hydropneumatic installations

PA 14

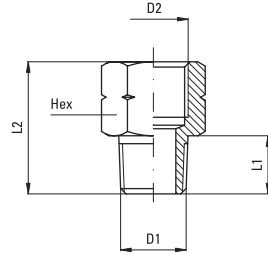
Taper female-male reducing connector



Part Number	D1 NPTF	D2 NPTF	L1	L2	HEX	oz
14 18 10-32	1/8	10-32 UNF	.334 (8.5)	.590 (15)	.472 (12)	
14 1/4 1/8	1/4	1/8	.511 (13)	.748 (19)	.551 (14)	.441 (12.5)
14 3/8 1/8	3/8	1/8	.511 (13)	.748 (19)	.708 (18)	
14 3/8 1/4	3/8	1/4	.511 (13)	.748 (19)	.708 (18)	.635 (18)
14 1/2 1/4	1/2	1/4	.669 (17)	.944 (24)	.866 (22)	
14 1/2 3/8	1/2	3/8	.669 (17)	.944 (24)	.866 (22)	

PA 16

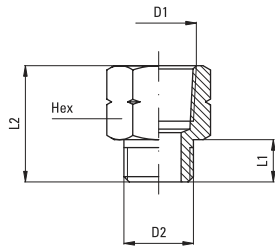
Adaptor male-female, taper



Part Number	D1 NPTF	D2 BSP	L1	L2	HEX	oz
16 10-32 M5	10-32 UNF	M5x0.8	.196 (5)	.472 (12)	.315 (8)	
16 1/8 1/8	1/8	G1/8	.334 (8.5)	.748 (19)	.708 (18)	0.423 (12)
16 1/4 1/4	1/4	G1/4	.511 (13)	1.063 (27)	.708 (18)	0.952 (27)
16 3/8 3/8	3/8	G3/8	.511 (13)	1.063 (27)	.866 (22)	1.376 (39)
16 1/2 1/2	1/2	G1/2	.669 (17)	1.338 (34)	1.063 (27)	2.310 (65.5)

PA 17

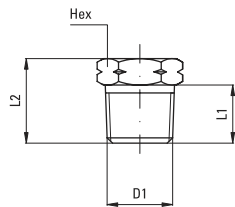
Adaptor male-female, parallel



Part Number	D1 NPTF	D2 BSP	L1	L2	HEX	oz
17 1/8 1/8	1/8	G1/8	.236 (6)	.708 (18)	.551 (14)	.688 (12.5)
17 1/4 1/4	1/4	G1/4	.315 (8)	.944 (24)	.669 (17)	.952 (27)
17 3/8 3/8	3/8	G3/8	.354 (9)	.984 (25)	.822 (22)	1.376 (39)
17 1/2 1/2	1/2	G1/2	.393 (10)	1.181 (30)	.944 (24)	1.746 (49.5)

PA 19

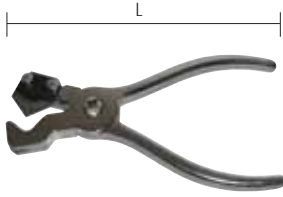
Male plug



Part Number	D1 NPTF	L1	L2	HEX	oz
19 00 1/8	1/8	.334 (8.5)	.492 (12.5)	.472 (12)	.211 (6)
19 00 1/4	1/4	.511 (13)	.708 (18)	.551 (14)	.493 (14)
19 00 3/8	3/8	.511 (13)	.708 (18)	.708 (18)	.846 (24)
19 00 1/2	1/2	.669 (17)	.905 (23)	.866 (22)	

PA 34

Hose Cutter



Part Number	Tube OD	L	oz
34 12	from 1/8" to 1/2"	5.120 (130)	3.510 (99.5)
34 25	from 1/2" to 1"	7.283 (185)	10.335 (293)

PA 37

Spare Blades



Part Number	Tube OD
37 12	from 1/8" to 1/2"
37 25	from 1/2" to 1"

POLYAMIDE 12

FLEXIBLE TUBING

Limited humidity absorption, great dimensional stability at high temperatures and good chemical resistance are the major features of the C.MATIC Polyamide 12, highly recommended for all standard industrial applications.

Working temperature: -40° F to +212° F
 Vacuum rating: To 28" Hg
 Hardness: 64 Shore D
 Working Pressure: 4 to 1 Safety Factor
 Water absorption: 1%
 Diameter Tolerances: +/- .002

Pressure variation (%) in relation with temperature change	Part Number	Diameter			Pressure at 75° F	
		OD (in)	ID (in)	Bend Radius (in)	Working pressure (psi)	Bursting point (psi)
68° F 100%	28010000-colour	1/8	.093	.375	264	1058
104° F 85%	28010010-colour	5/32	.106	.500	348	1392
140° F 60%	28010030-colour	1/4	.180	.875	293	1174
176° F 40%	28010040-colour	5/16	.232	1.250	268	1073
212° F 35%	28010050-colour	3/8	.275	1.500	279	1116
	28010060-colour	1/2	.375	2.000	257	1029

Reel length 100 feet

Colours available: Neutral (N), Blue (B) and Black (BK) on stock. Other colours available upon request.

POLYURETHAN 95 DUROMETER

FLEXIBLE TUBING

C.MATIC ether based Polyurethan resists attack with moisture, humidity and fungus. It is highly abrasion and UV resistant. Its flexibility allows for assemblies in reduced spaces and for very narrow bending radius and makes of our Polyurethan 95 one of the most popular choices.

Working temperature: -40° F to +140° F.
 Vacuum rating: To 28" Hg
 Hardness: 95 Shore A
 Working Pressure: 3 to 1 Safety Factor
 Diameter Tolerances: +/- .003

Pressure variation (%) in relation with temperature change	Part Number	Diameter			Pressure at 75° F	
		OD (in)	ID (in)	Bend Radius (in)	Working pressure (psi)	Bursting point (psi)
68° F 100%	28060000-colour	1/8	.0625	1/4	256	768
86° F 83%	28060010-colour	5/32	.0732	3/8	193	580
104° F 72%	28060030-colour	1/4	.160	1/2	169	507
122° F 64%	28060040-colour	5/16	.216	3/4	140	420
140° F 47%	28060050-colour	3/8	.245	7/8	164	493
	28060060-colour	1/2	.320	1 1/8	169	507

Reel length 100 feet

Colours available: Neutral (N), Blue (B) and Black (BK) on stock. Other colours available upon request.

PA11 and PTFE tubings available upon request.



PU LINE



PU 10-11



PU 10-12



PU 10-20



PU 10-21



P 113



P 213

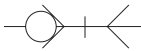
MULTIPLE CONNECTOR

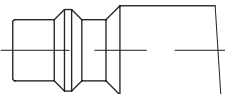
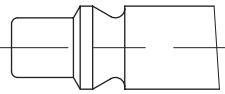
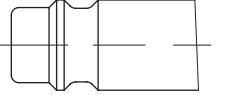
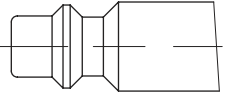
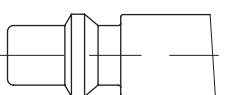

Technical remarks [30_30](#)
[31_33](#)

PU 10-11
PU 10-12
PU 10-20
PU 10-21
P 113
P 213

MULTI PROFILE QUICK COUPLER-INDUSTRIAL INTERCHANGE

1	2	3	4	
Body	Balls	O-Ring	Spring	Plug
Brass UNI EN 12164 CW 614N Nickel Plated	Stainless steel AISI420	NBR	Stainless steel AISI302	Hardened zinc plated steel



Suitable with following plugs profiles		Flow rate at 87 psi
actual size		
	MIL C4109 Profile	46 SCFM
	ARO 210 Profile	41 SCFM
	German Profile	56.5 SCFM
	ISO 6150B Profile	45 SCFM
	Standard Swedish Profile	45 SCFM
	Standard Italian Profile	38 SCFM

MULTI PROFILE QUICK COUPLER

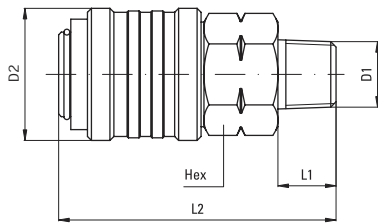
DATA SHEET

C.MATIC single shut off coupler is Industrial Interchangeable and suitable with the most common European plugs profiles

Application fields:
Pneumatic equipment, Air tools
Working pressure:
0 ÷ 218 psi
Working temperature:
- 4° F ÷ 158° F

PU 10

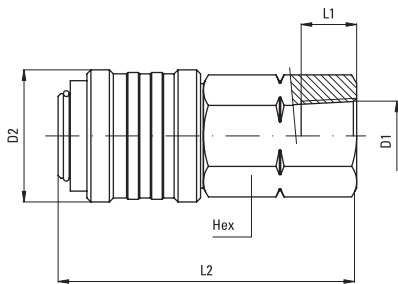
Male couplig



Part Number	D1 NPTF	D2	L1	L2	HEX	oz
11 00 14	1/4	.925 (23.5)	.511 (13)	2.165 (55)	.787 (20)	
11 00 38	3/8	.925 (23.5)	.511 (13)	2.165 (55)	.787 (20)	
11 00 12	1/2	.925 (23.5)	.669 (17)	2.283 (58)	.945 (24)	

PU 10

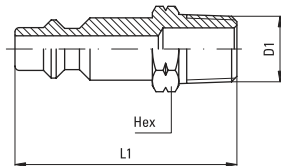
Female couplig



Part Number	D1 NPTF	D2	L1	L2	HEX	oz
12 00 14	1/4	.925 (23.5)	.511 (13)	2.165 (59)	.787 (20)	
12 00 38	3/8	.925 (23.5)	.511 (13)	2.362 (60)	.787 (20)	
12 00 12	1/2	.925 (23.5)	.551 (14)	2.48 (63)	.945 (24)	

PU 10

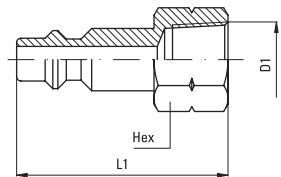
Male plug



Part Number	D1 NPTF	L1	HEX	oz
20 00 14	1/4	1.654 (42)	.551 (14)	
20 00 38	3/8	1.654 (42)	.708 (18)	
20 00 12	1/2	1.85 (47)	.866 (22)	

PU 10

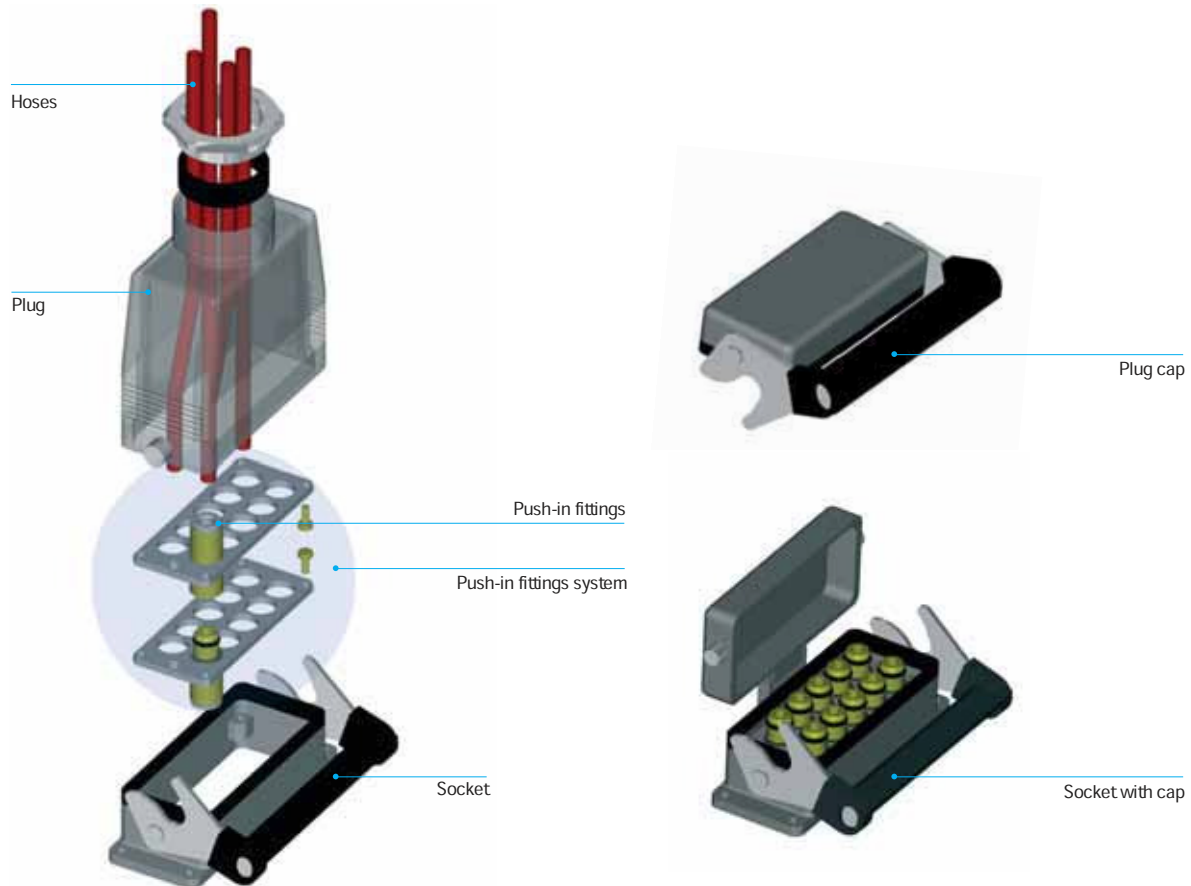
Female plug



Part Number	D1 NPTF	L1	HEX	oz
21 00 14	1/4	1.575 (40)	.669 (17)	
21 00 38	3/8	1.575 (40)	.822 (22)	
21 00 12	1/2	1.732 (44)	.944 (24)	

MULTIPLE CONNECTOR

Multiple connector sheath	Couplings support	O-Ring	Push-in fittings
Light die cast alloy	Aluminium	NBR	PN Push-In fittings



MULTIPLE CONNECTOR

DATA SHEET

The multiple connector is made of a fixed part to be connected to the control device of pneumatic powered machines and a mobile part to be assembled to the air distribution equipment. The big advantage offered by it, is that a bundle of hoses, varying from min 10 to max 20 tubings, can be rapidly and safely connected and disconnected.

Our multiple connector is manufactured in such a way that the reverse assembly of the two parts is not possible.

Application fields:

Pneumatic installations

Recommended tubing:

PA 6, PA 11, PA 12

Polyethylene, Polyurethane (95 durometer or above).

Working pressure:

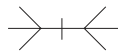
0 ÷ 218 psi

Working temperature:

- 4° F ÷ 158° F

P 113

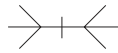
Equipped with push-in fittings



Part Number	Tube OD	Couplings n°	oz
113 5/32 12	5/32	12	24.868
113 1/4 10	1/4	10	29.877

P 213

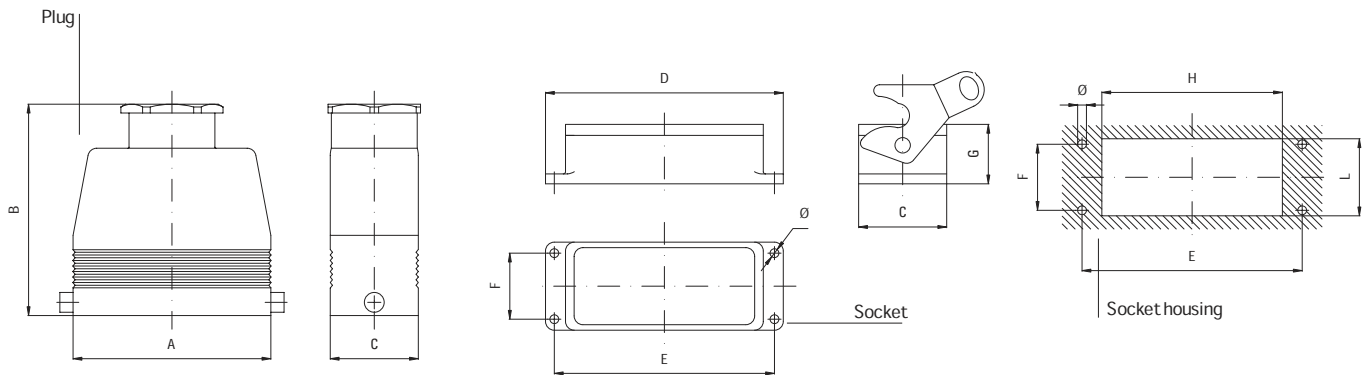
Equipped with push-in fittings



Part Number	Tube OD	Couplings n°	oz
213 5/32 20	5/32	20	32.946
213 1/4 14	1/4	14	37.884



Type	A	B	C	D	E	F	G	H	L	Ø
P113	3.661 (93)	3.937 (100)	1.772 (45)	4.449 (113)	4.055 (103)	1.260 (32)	1.102 (28)	3.386 (86)	1.417 (36)	.177 (4.5)
P213	4.724 (120)	3.937 (100)	1.772 (45)	5.512 (140)	5.118 (130)	1.260 (32)	1.102 (28)	4.449 (113)	1.417 (36)	.177 (4.5)





PV LINE



PV 18

PV 41

PV 21

PV 23

PV 33

PV 26

PV 22

PV 27

Technical remarks [36_36](#)

[37_41](#)

PV 18
PV 41
PV 21
PV 23
PV 33
PV 26
PV 22
PV 27



PV 45

PV 46

PV 11-FE

PV 11-BE

[42_45](#)

PV 45
PV 46
PV 11-FE
PV 11-BE

FLOW CONTROLS

Working pressure

from 0 up to 145 psi

Working temperature

from 32 °F up to 158 °F

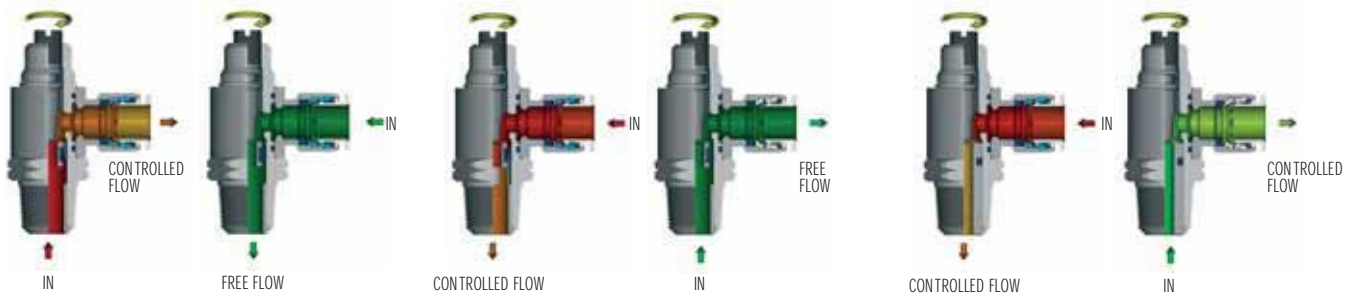
... /C = Meter Out



... /N = Meter In



... /B = Bidirectional



FLOW CONTROLS

DATA SHEET

C.MATIC flow controls can adjust the flow in pneumatic circuit or control the speed of a pneumatic cylinder. Depending on the flow control version used, the setting can be made both ways (Bidirectional version), or just one way (Meter Out or Meter In version). The One way version is particularly used to adjust the speed of pneumatic cylinders.

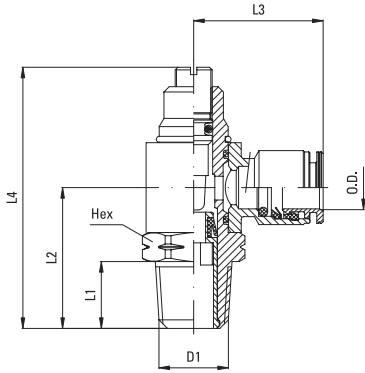
Recommended tubing:
according to the fitting connected to the flow control.
Application field:
pneumatic installations fed with filtered, lubricated air.

Threads	Threads Specifications	Tightening Torque (lb-ft)				
		10-32	1/8"	1/4"	3/8"	1/2"
NPTF threads	ANSI/ASME B1.20.3		7.376 ÷ 8.851	10.326 ÷ 11.801	11.801 ÷ 13.276	13.276 ÷ 14.751
NPTF pre-coated threads	ANSI/ASME B1.20.3		3.688 ÷ 4.425	5.901 ÷ 7.376	7.376 ÷ 8.851	11.801 ÷ 13.276
UNF parallel threads with seal	ANSI/ASME B1.1	0.738 ÷ 1.106				

PV18PV41	Body	Banjo ring	O-Ring
	Brass UNI EN 12164 CW 614N Nickel plated	Brass UNI EN 12165 CW 617N Nickel plated	NBR
PV21	Body	Adjusting screw, nut and knob	O-Ring
	Anodized aluminium	Brass UNI EN 12164 CW 614N Nickel plated	NBR

PV 18

Flow control with swivel push-in fitting



Part Number	Tube OD	D1 UNF	L1	L2	L3	L4	HEX	oz
18 5/32 10-32	5/32	10-32	.196 (5)	.590 (15)	.708 (18)	1.259 (32)	3/8 (9.52)	

Part Number	Tube OD	D1 NPTF	L1	L2	L3	L4	HEX	oz
18 5/32 1/8	5/32	1/8	.334 (8.5)	.866 (22)	.787 (20)	1.692 (43)	9/16 (14.28)	1.164 (33)
18 1/4 1/8	1/4	1/8	.334 (8.5)	.866 (22)	.866 (22)	1.692 (43)	9/16 (14.28)	1.235 (35)
18 1/4 1/4	1/4	1/4	.511 (13)	1.063 (27)	.944 (24)	2.007 (51)	11/16 (17.46)	2.116 (60)
18 5/16 1/8	5/16	1/8	.334 (8.5)	.866 (22)	.905 (23)	1.692 (43)	9/16 (14.28)	
18 5/16 1/4	5/16	1/4	.511 (13)	1.063 (27)	.944 (24)	2.007 (51)	11/16 (17.46)	2.152 (61)
18 3/8 1/4	3/8	1/4	.511 (13)	1.063 (27)	1.023 (26)	2.007 (51)	11/16 (17.46)	2.310 (65.5)

Available as:

... /C = Meter Out



... /N = Meter In

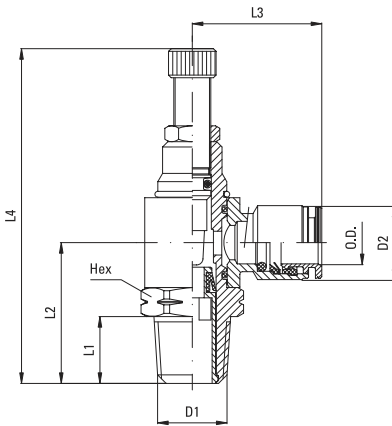


... /B = Bidirectional



PV 41

Flow control with swivel push-in fitting and handwheel adjustment



Part Number	Tube OD	D1 UNF	L1	L2	L3	L4	HEX	oz
41 5/32 10-32	5/32	10-32	.196 (5)	.590 (15)	.708 (18)	1.692 (43)	3/8 (9.52)	

Part Number	Tube OD	D1 NPTF	L1	L2	L3	L4	HEX	oz
41 5/32 1/8	5/32	1/8	.334 (8.5)	.866 (22)	.787 (20)	2.126 (54)	9/16 (14.28)	
41 1/4 1/8	1/4	1/8	.334 (8.5)	.866 (22)	.866 (22)	2.126 (54)	9/16 (14.28)	1.340 (38)
41 1/4 1/4	1/4	1/4	.511 (13)	1.063 (27)	.944 (24)	2.519 (64)	11/16 (17.46)	2.346 (66.5)
41 5/16 1/8	5/16	1/8	.334 (8.5)	.866 (22)	.905 (23)	2.126 (54)	9/16 (14.28)	
41 5/16 1/4	5/16	1/4	.511 (13)	1.063 (27)	.944 (24)	2.519 (64)	11/16 (17.46)	2.363 (67)
41 3/8 1/4	3/8	1/4	.511 (13)	1.063 (27)	1.023 (26)	2.519 (64)	11/16 (17.46)	2.469 (70)

Available as:

... /C = Meter Out



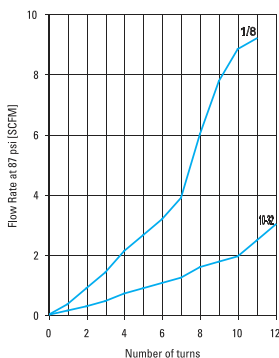
... /N = Meter In



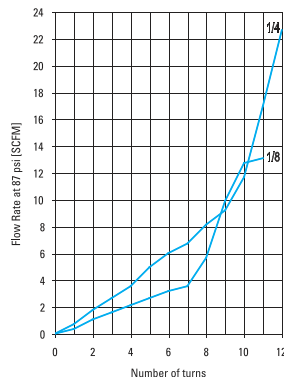
... /B = Bidirectional



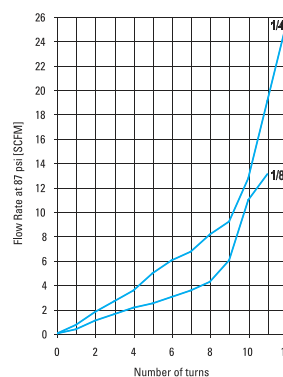
PV 18 5/32 - PV 41 5/32



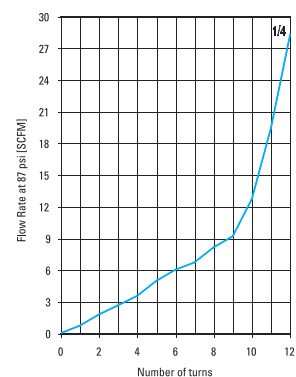
PV 18 1/4 - PV 41 1/4



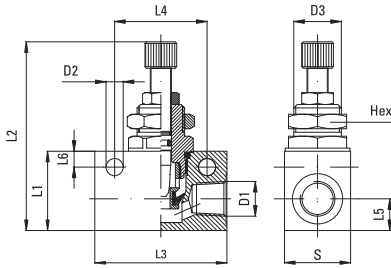
PV 18 5/16 - PV 41 5/16




PV 18 3/8 - PV 41 3/8



In Line Flow Control - Needle Valve



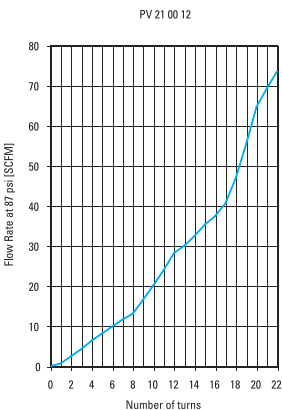
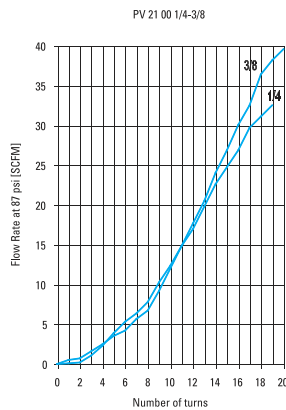
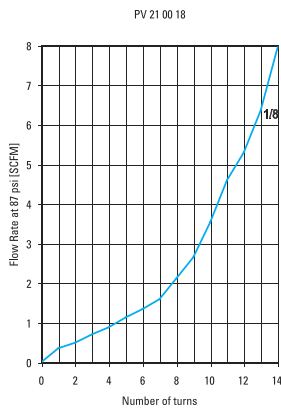
Part Number	D1 NPTF	D2	D3	L1	L2	L3	L4	L5	S	HEX	oz 
21 00 18	1/8	.177 (4.5)	.472 (12)	.826 (21)	2.204 (56)	1.338 (34)	.944 (24)	.315 (8)	.629 (16)	.590 (15.9)	1.728 (49)
21 00 14	1/4	.255 (6.5)	.708 (18)	1.181 (30)	2.952 (75)	1.968 (50)	1.378 (35)	.472 (12)	.984 (25)	.866 (22.9)	5.785 (164)
21 00 38	3/8	.255 (6.5)	.708 (18)	1.181 (30)	2.952 (75)	2.283 (58)	1.578 (40)	.472 (12)	.984 (25)	.866 (22)	
21 00 12	1/2	.255 (6.5)	.866 (22)	1.574 (40)	3.622 (92)	2.559 (65)	1.968 (50)	.669 (17)	1.181 (30)	1.023 (26)	10.617 (301)

Available as:

... /U = One way

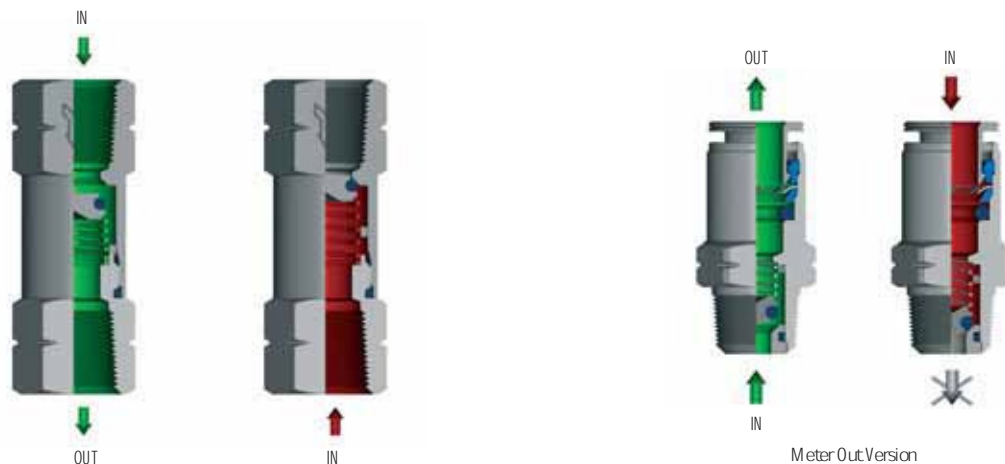


... /B = Bidirectional



CHECK VALVE

Body	Spring	O-Ring	Working temperature	Cracking pressure	Working pressure
Brass UNI EN 12164 CW 614N Nickel plated	Stainless Steel AISI 302	NBR	from 14° F up to 158° F.	2.9 psi	from 29 psi up to 145 psi



CHECK VALVE

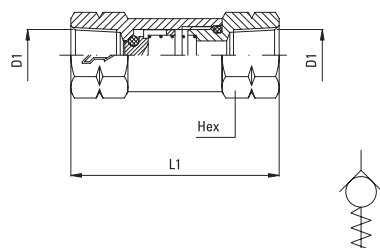
DATA SHEET

The flow is allowed only in one way (the arrow direction engraved on the body) and stopped in the reverse way

Recommended tubing according to the fitting connected to the valve.
Application field:
Pneumatic installation fed with filtered lubricated air.

PV 23

Check Valve

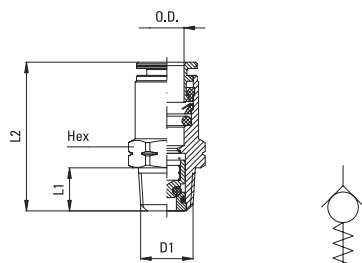


Part Number	D1 NPTF	L1	HEX	oz
23 00 18	1/8	1.496 (38)	.511 (13)	
23 00 14	1/4	1.653 (42)	.629 (16)	
23 00 38	3/8	2.047 (52)	.787 (20)	
23 00 12	1/2	2.440 (62)	.944 (24)	

Flow at 87 psi:	PV 23 00 18: 33	SCFM
	PV 23 00 14: 57	SCFM
	PV 23 00 38: 86	SCFM
	PV 23 00 12: 124	SCFM

PV 33

Straight connection with check valve

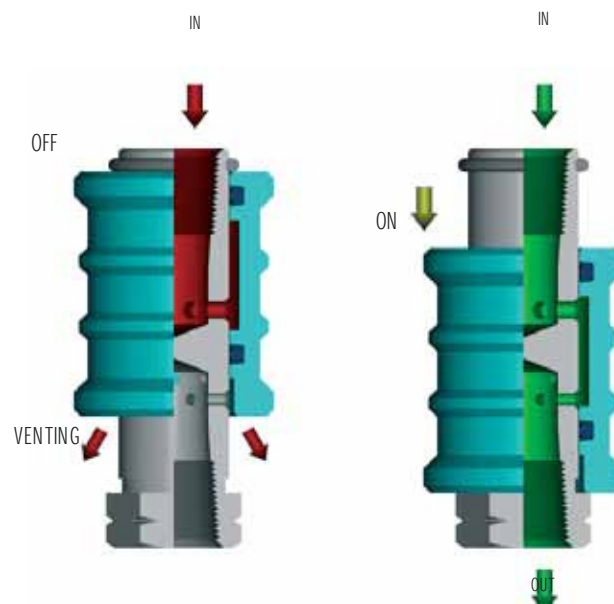


Part Number	Tube OD	D1 NPTF	L1	L2	HEX	oz
33 1/4 1/8	1/4	1/8	.334 (8.5)	1.122 (28.5)	.511 (13)	
33 1/4 1/4	1/4	1/4	.511 (13)	1.26 (32)	.551 (14)	

Meter Out Version

SLIDE VALVE

Body	Sleeve	O-Ring	Working pressure	Working temperature
Brass UNI EN 12164 CW 614N Chrome plated	Anodized aluminium	NBR	From 0 up to 217 psi	From 14° F up to 158° F



SLIDE VALVE

DATA SHEET

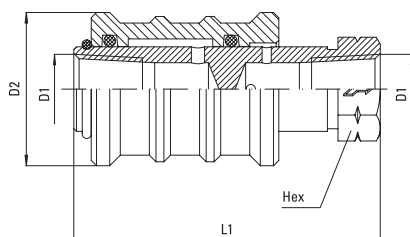
The valve is used to section a pneumatic installation. Sliding the sleeve on the rod, both ON and OFF positions can be achieved. When the sleeve is against the rod hexagon, the flow goes in the arrow direction (ON); pushing it backwards the air supply is cut off and the installation is vented (OFF).


Recommended tubing:
according to the fitting connected to the valve.

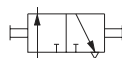
Application field:
pneumatic installation fed with filtered lubricated air.

PV 26

Slide valve

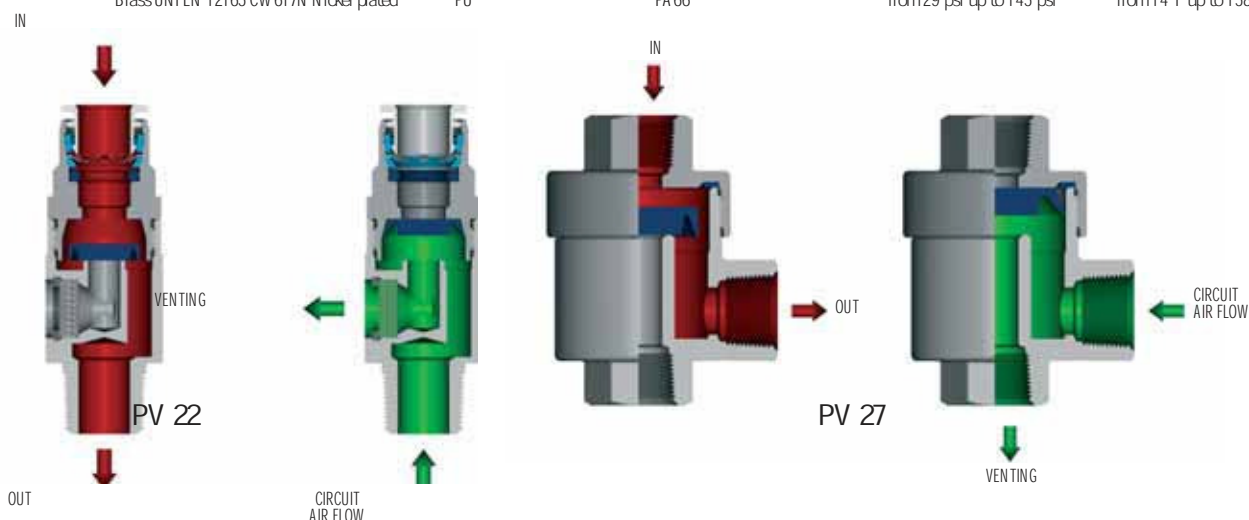


Part Number	D1 NPTF	D2	L1	HEX	oz 
26 1/8 1/8	1/8	.984 (25)	1.889 (48)	.551 (14)	1.764 (50)
26 1/4 1/4	1/4	1.181 (30)	2.283 (58)	.669 (17)	2.998 (85)
26 3/8 3/8	3/8	1.378 (35)	2.677 (68)	.866 (22)	
26 1/2 1/2	1/2	1.574 (40)	3.149 (80)	1.063 (27)	



QUICK EXHAUST VALVE

PV22	Body	Lip ring	Muffler	Working pressure	Working temperature
	Brass UNI EN 12164 CW 614N Nickel plated	PU	Stainless Steel AISI316	from 29 psi up to 145 psi	from 14° F up to 158° F
PV27	Body	Lip ring	Gasket	Working pressure	Working temperature
	Brass UNI EN 12165 CW 617N Nickel plated	PU	PA 66	from 29 psi up to 145 psi	from 14° F up to 158° F



QUICK EXHAUST VALVE

DATA SHEET

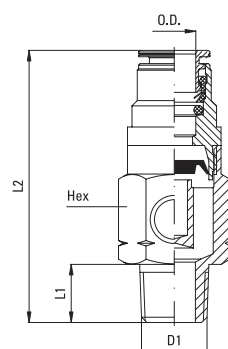
This valve can easily vent the air flowing in the circuit in case of an air supply failure. If assembled on the cylinder port, it increases the cylinder speed.

Recommended tubing:
according to the fitting connected to the valve.

Application field:
pneumatic installation fed with filtered, lubricated air.

PV 22

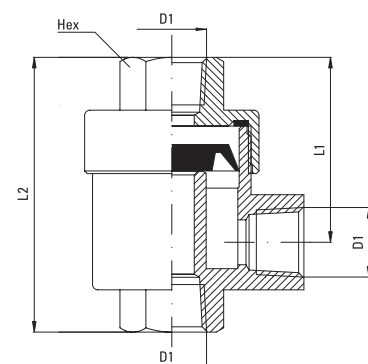
In Line Quick Exhaust valve



Part Number	Tube OD	D1 NPTF	L1	L2	HEX	oz
22 1/4 1/4	1/4	1/4	.511 (13)	2.087 (53)	.708 (18)	
22 3/8 3/8	3/8	3/8	.511 (13)	2.539 (64.5)	1.063 (27)	
22 1/2 1/2	1/2	1/2	.669 (17)	2.992 (76)	1.338 (34)	

PV 27

Quick Exhaust valve

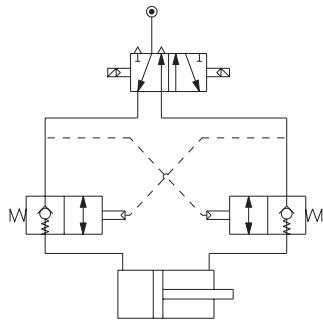


Part Number	D1 NPTF	L1	L2	HEX	oz
27 1/8 1/8	1/8	1.062 (27)	1.653 (42)	.590 (15)	3.351 (95)
27 1/4 1/4	1/4	1.377 (35)	2.125 (54)	.748 (19)	5.573 (158)
27 3/8 3/8	3/8	1.377 (35)	2.165 (55)	.826 (21)	5.644 (160)
27 1/2 1/2	1/2	1.771 (45)	2.834 (72)	1.023 (26)	11.464 (325)

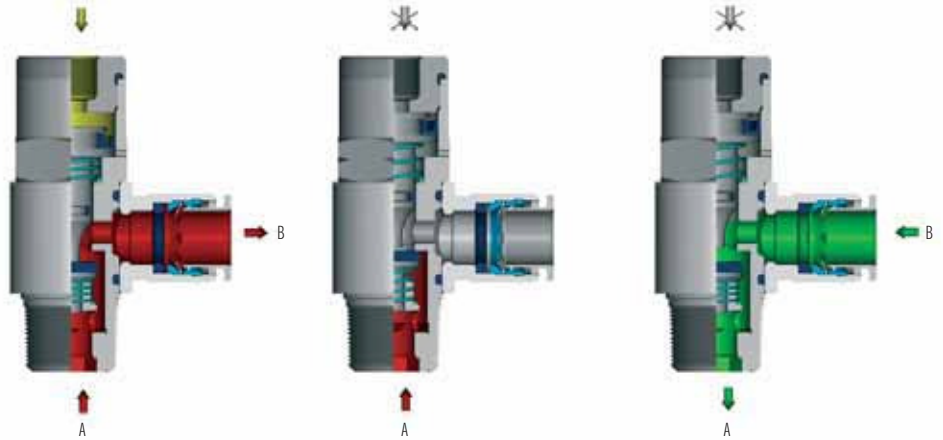
PILOT OPERATED CHECK VALVE

Body	Piston	Spring	O-Ring	Working pressure	Working temperature
Brass UNI EN 12164 CW 614N Nickel plated	Stainless Steel AISI 304	Stainless Steel AISI 302	NBR-PU	29 psi to 145 psi	23° F to 158° F

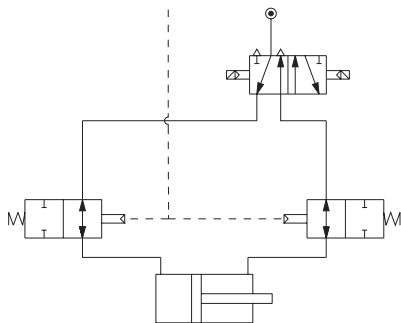
/A = One Way



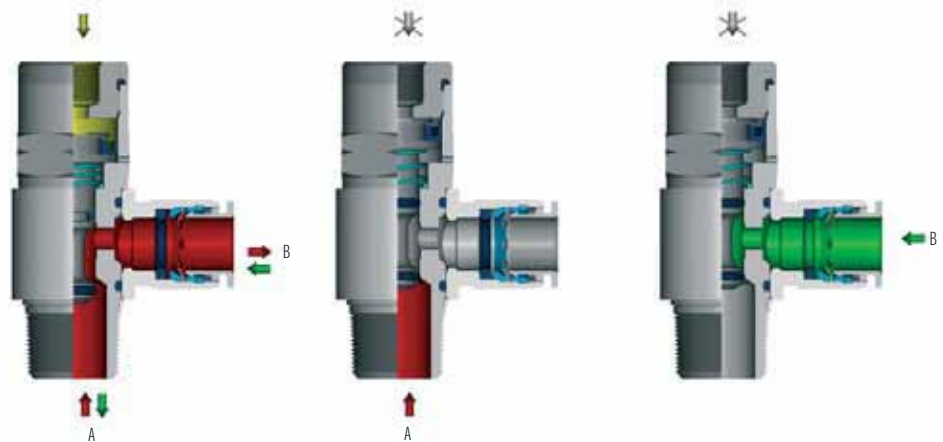
PILOT PRESSURE (P)



/B = Bidirectional



PILOT PRESSURE (P)



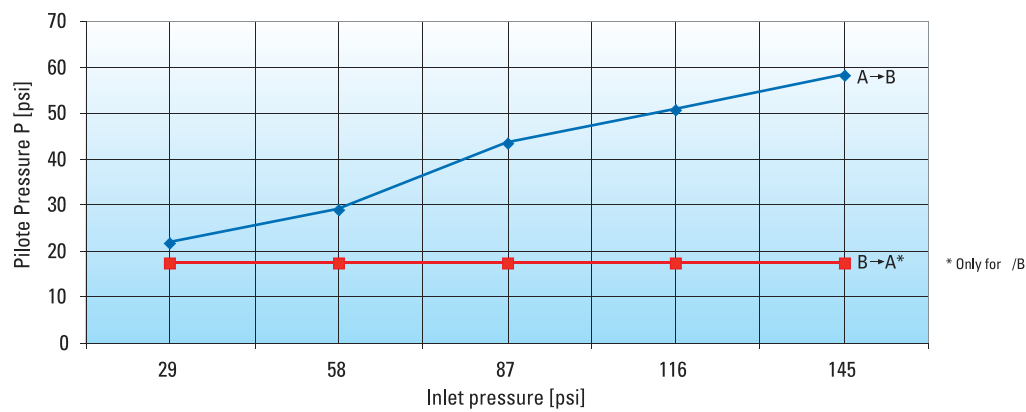
PILOT OPERATED CHECK VALVE DATA SHEET

The Pilot Operated check valve allows the flow only when a pilot signal is applied to the pilot port; if assembled in pair on the cylinder ports, in case of sudden pressure drops the Pilot Operated Check Valve immediately stops the cylinder piston stroke.

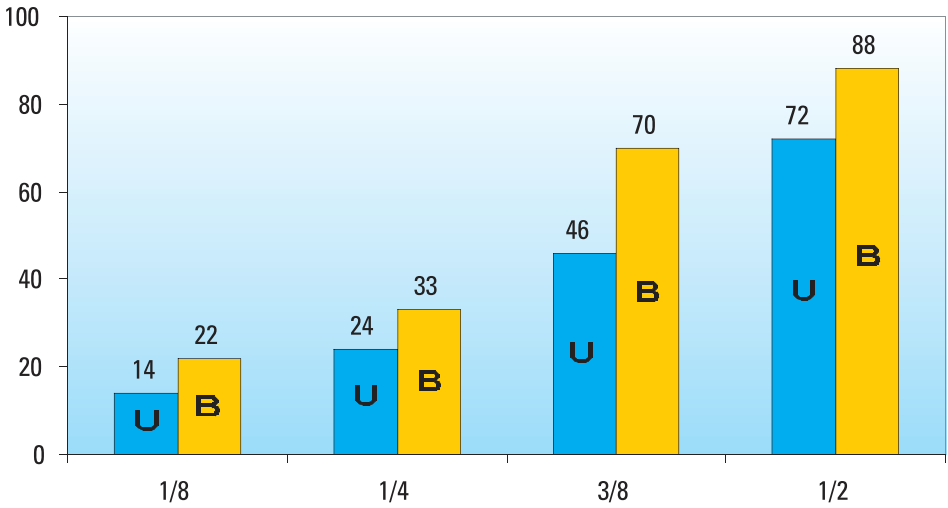
Recommended tubing:
according to the fitting connected to the pilot operated check valve.

Application field:
pneumatic circuits fed with filtered lubricated air.

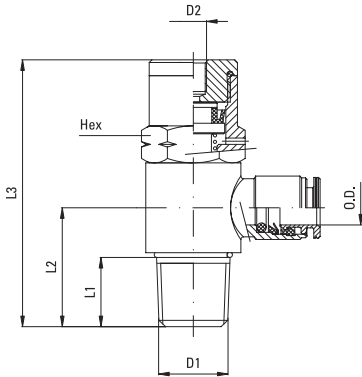
Cracking Pressure



Flow at 78 psi [SCFM]



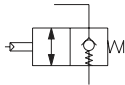
Piloted Operated Check valve



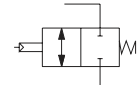
Part Number	Tube OD	D1 NPTF	D2	L1	L2	L3	HEX	oz
45 1/4 1/8	1/4	1/8	10-32	.334 (8.5)	.689 (17.5)	1.692 (43)	.511 (13)	
45 1/4 1/4	1/4	1/4	10-32	.511 (13)	.918 (23.5)	1.969 (50)	.669 (17)	
45 3/8 3/8	3/8	3/8	1/8	.511 (13)	.984 (25)	2.224 (56.5)	.787 (20)	
45 1/2 1/2	1/2	1/2	1/8	.669 (17)	1.22 (31)	2.657 (67.5)	.984 (25)	

Available as:

... /U = One way

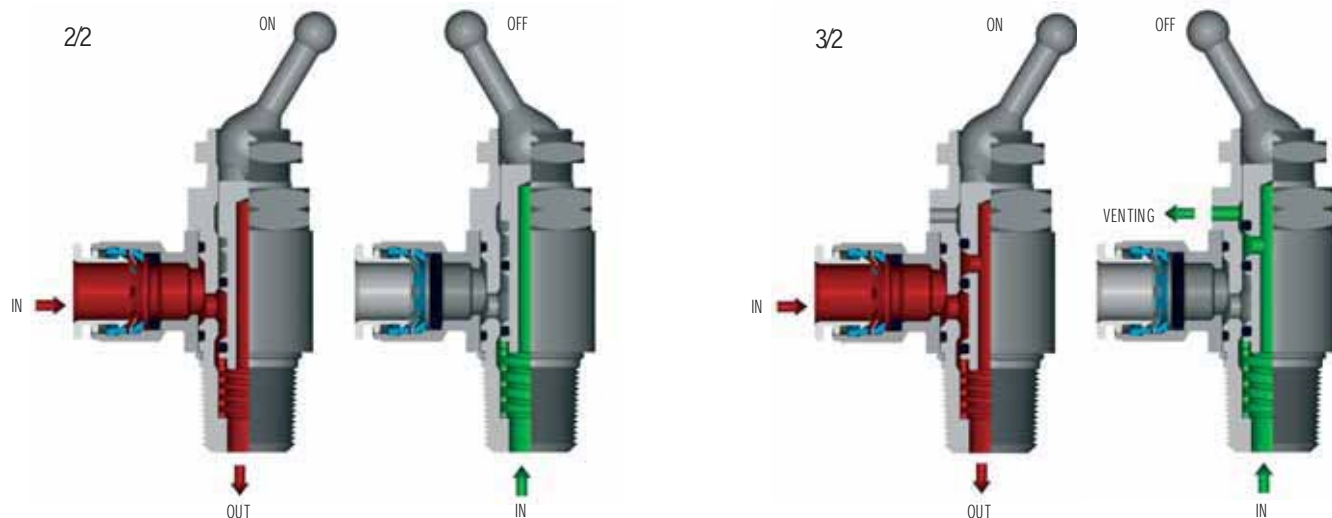


... /B = Bidirectional



PNEUMATIC SWITCH

Pneumatic switch	Spring	O-Ring	Working pressure	Working temperature	Flow rate at 87 psi
Brass UNI EN 12164 CW 614N Nickel plated	Stainless Steel AISI 302	NBR	0 psi to 217 psi	14° F to 158° F	PV 46 1/4 1/8: 21.5 SCFM PV 46 1/4 1/4: 30 SCFM



PNEUMATIC SWITCH

DATA SHEET

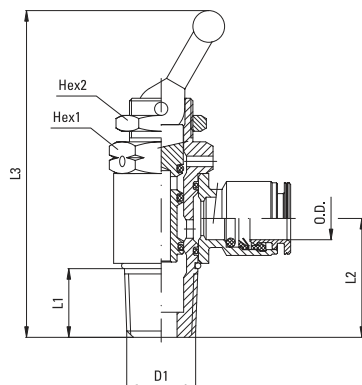
The PV 46 is a pneumatic switch. It is available in a 2/2 and 3/2-way version. The goal of the 2/2 way switch is to cut off the flow in the circuit whenever needed by simply operating the lever. The 3/2 way valve cuts off the flow and vents to atmosphere the terminal part of the circuit.

Recommended tubing:
according to the fitting connected to the pressure control.

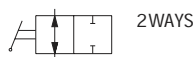
Application field:
pneumatic circuits fed with filtered, lubricated air.

PV 46

Pneumatic switch



Part Number	Tube OD	D1 NPTF	L1	L2	L3	HEX1	HEX2	oz
46 1/4 1/8	1/4	1/8	.335 (8.5)	.669 (17)	2.165 (55)	.551 (14)	.59 (15)	
46 1/4 1/4	1/4	1/4	.511 (13)	.886 (22.5)	2.441 (62)	.669 (17)	.59 (15)	



MUFFLER

	Body	Muffler	Working pressure	Working temperature
PV11-FE	Brass UNI EN 12164 CW 614N Nickel plated	Stainless Steel AISI 304	0 psi to 174 psi	14° F to 158° F
PV11-BE	Brass UNI EN 12164 CW 614N	Sintered bronze	0 psi to 174 psi	14° F to 158° F

Noise level at 87 psi

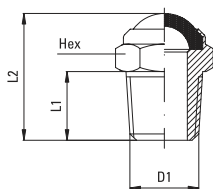
Type	1/8	1/4	3/8	1/2
PV11 -FE	74 dB	72 dB	88 dB	90 dB
PV11 -BE	75 dB	81 dB	82 dB	85 dB

Filtration threshold

Type	
PV11 -FE	100-200 µm
PV11 -BE	35 µm

PV 11-FE

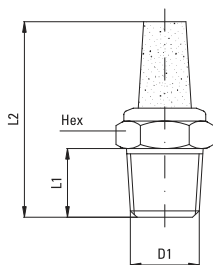
Air muffler with stainless steel wire



Part Number	D1 NPTF	L1	L2	HEX	oz
11 00 18-FE	1/8	.236 (6)	.59 (15)	.511 (13)	
11 00 14-FE	1/4	.433 (11)	.866 (22)	.63 (16)	
11 00 38-FE	3/8	.433 (11)	.905 (23)	.748 (19)	
11 00 12-FE	1/2	.511 (13)	.984 (25)	.945 (24)	

PV 11-BE

Sintered bronze air muffler



Part Number	D1 NPTF	L1	L2	HEX	oz
11 00 18-BE	1/8	.236 (6)	1.142 (29)	.511 (13)	
11 00 14-BE	1/4	.433 (11)	1.417 (36)	.63 (16)	
11 00 38-BE	3/8	.433 (11)	1.693 (43)	.748 (19)	
11 00 12-BE	1/2	.511 (13)	1.929 (49)	.945 (24)	